

## Poverty & Inequality: What's next?

### Seven Suggestions

Sabina Alkire

*Tabita, Kenya*

*Rabiya, India*

*Stephanie, Madagascar*

*Agatha, Madagascar*

*Dalma, Kenya*

*Ann-Saphia, Kenya*

*Valérie, Madagascar*



# Seven Frontiers for Multidimensional Measures

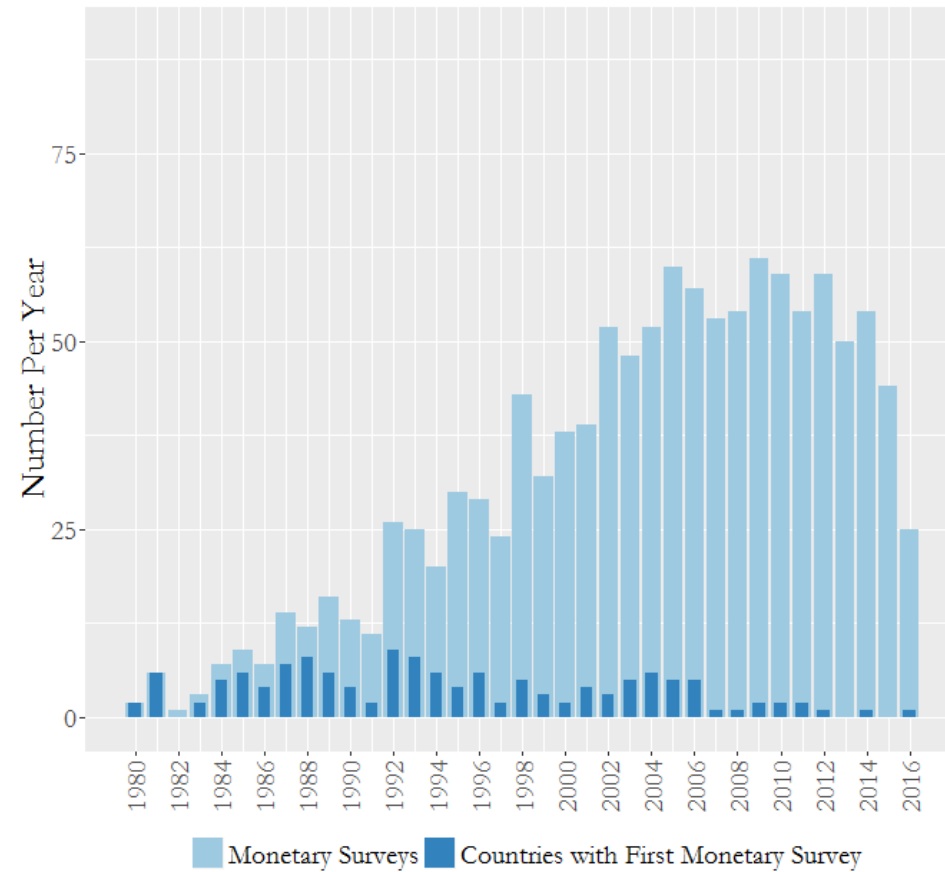
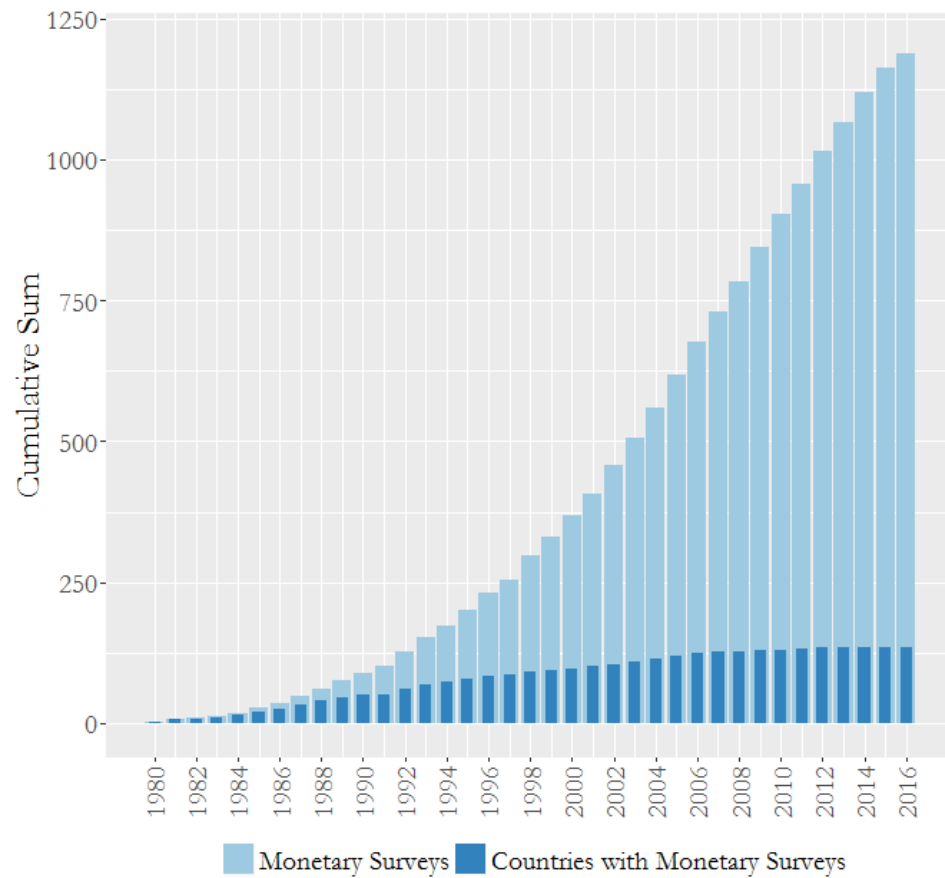
1. **Data:** Missing Dimensions & Indicators, 'Joint'
2. **Topical Indices:** Child, Gendered, Worker, Well-being
3. **Policy Applications:** Targeting, Budget, Management
4. **Analysis:** Endogeneity, Accuracy, Preferences?
5. **Engagement:** Protagonists of Poverty, Public
6. **Methodology:** Hybrid, Robustness, Imputation
7. **Teamwork:** Avoiding Overload; Being user-friendly

# How have we progressed?

“statistics are urgently needed for a comprehensive dossier of information on infant mortality rates and nutrition levels. Malnutrition must be monitored as closely as monetary variables. This stock-taking would be co-ordinated by a central technical unit which would establish a line of reporting to bureaucrats and political decision-makers, involving them directly in matters of social responsibility.”

*Adjustment with a Human Face*, UNICEF 1987

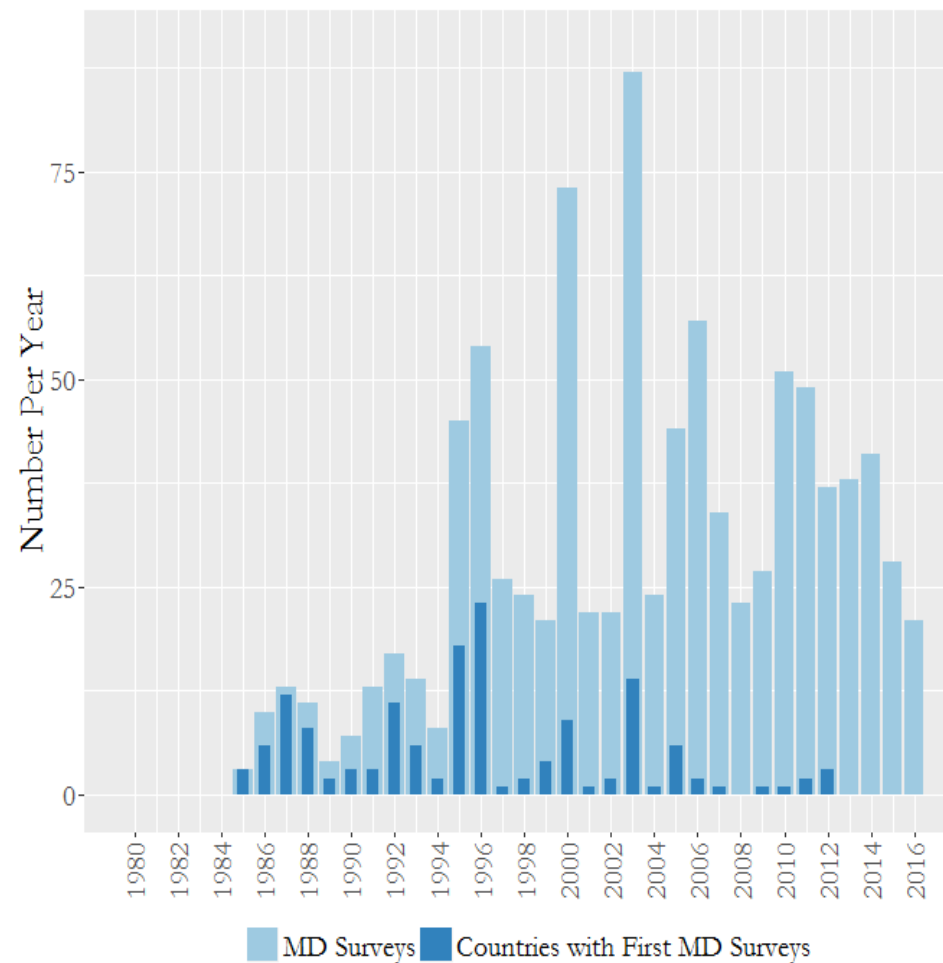
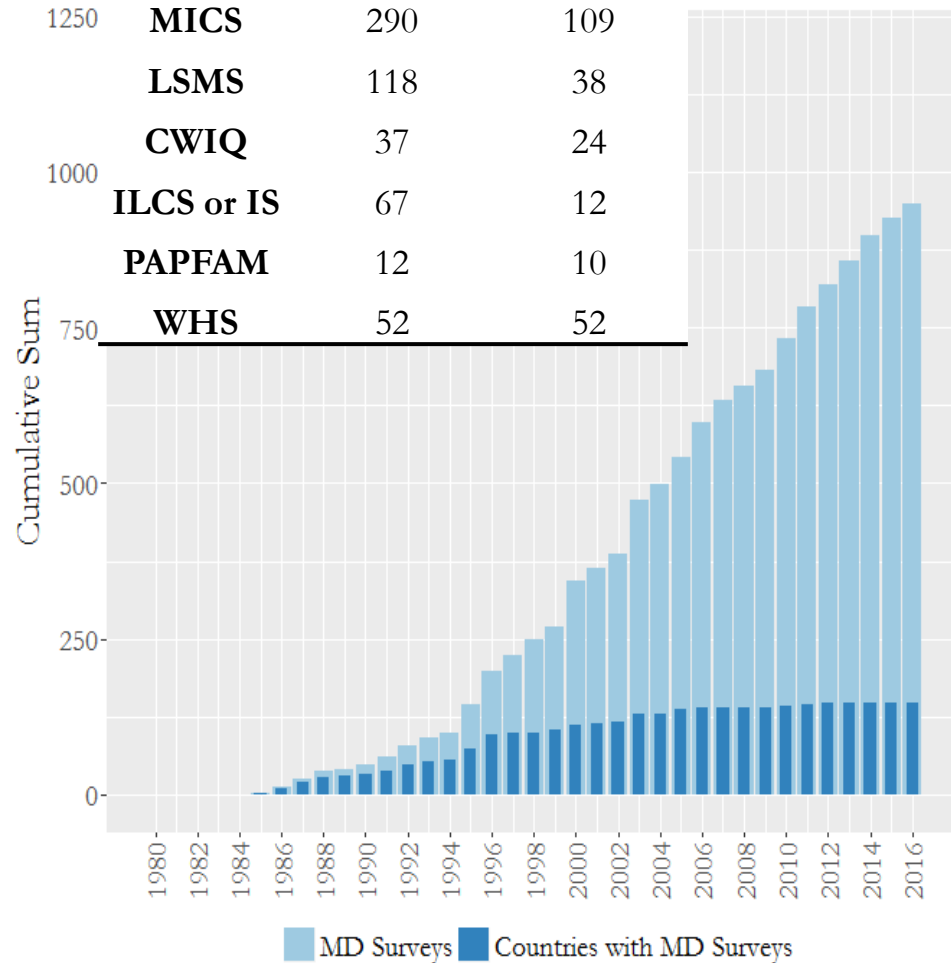
# Monetary Surveys; Cumulative and Number Per Year from PovCalNet



# *Multi-topic Surveys; Cumulative and Number Per Year*

## *Trend 5 year shorter; similar magnitude*

Survey	Number of surveys	Countries covered
<b>DHS</b>	372	90
<b>MICS</b>	290	109
<b>LSMS</b>	118	38
<b>CWIQ</b>	37	24
<b>ILCS or IS</b>	67	12
<b>PAPFAM</b>	12	10
<b>WHS</b>	52	52



# Atkinson Commission on Monitoring Global Poverty

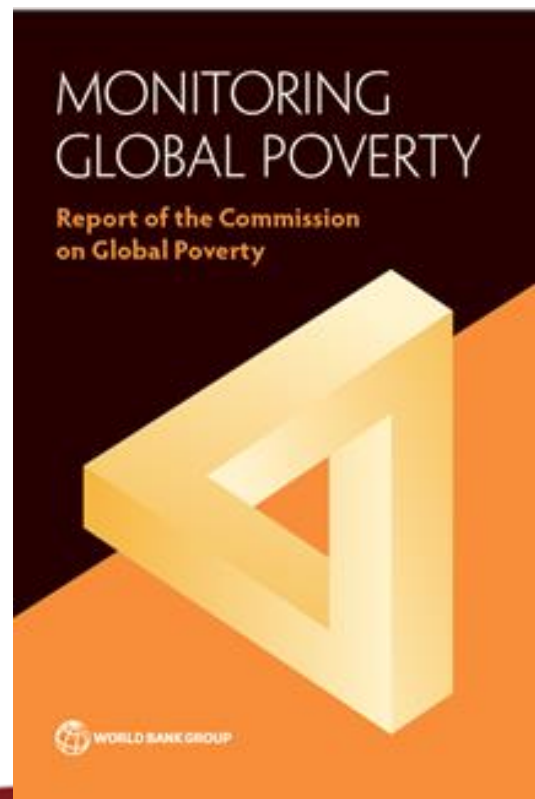
## Domains to Consider

1. Nutrition
2. Health status
3. Education
4. Housing conditions
5. Access to work
6. Personal security

What is feasible? (Data)

*Empowerment*

*Shame, Humiliation, Isolation*



# Do the data exist?

100 countries' present or future global MPI datasets covering 5.6 billion people (2015 pop numbers):

- 26 Surveys 2015-2016
- 35 Surveys 2013-2014
- 32 Surveys 2010-2012
- 7 Surveys 2006-2009
- **China:** 2014 CFPS
- **India:** 2015-16 NFHS4

Indonesia	DHS	2012
Brazil	PNAD	2015
Pakistan	DHS	2012-13
Nigeria	MICS	2016-17
Bangladesh	DHS	2014
Mexico	MICS	2015
Philippines	DHS	2013
Ethiopia	DHS	2016
Viet Nam	MICS	2013-14
Egypt	DHS	2014
Congo, Republic	MICS	2015-16
Thailand	MICS	2015-16
South Africa	NIDS	2014-15
Myanmar	DHS	2015-16
Tanzania	DHS	2015-16

# Every Indicator & precise response code needed to be hand-checked – no catalogue – nor citation index (!)

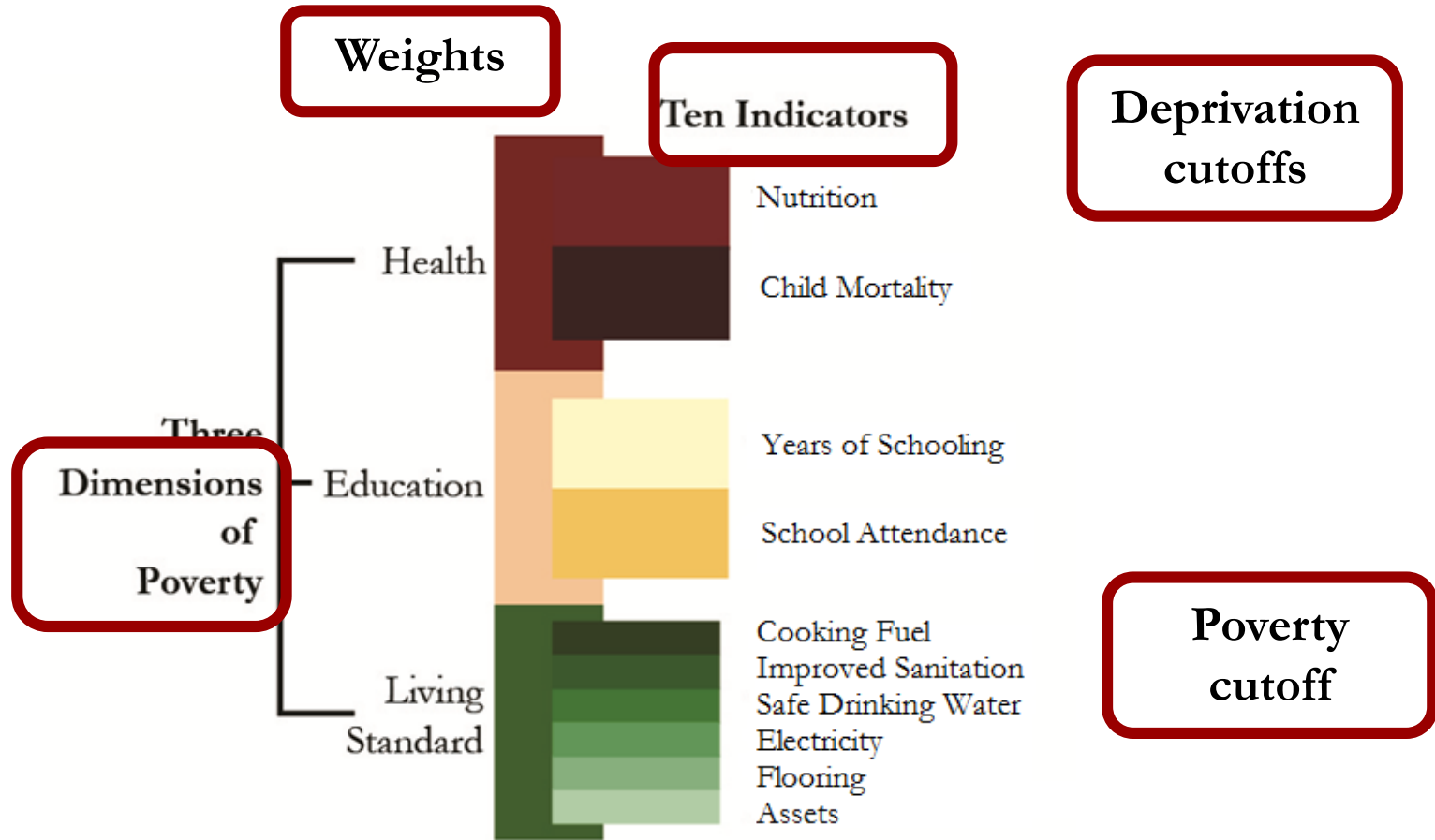
Aim of measure		Indicator to assess	Number of countries with the indicator	Population covered (2015) 1000s
12	Breastfeeding practises	Ever breastfed	93	3,895,619
		Breastfeeding initiation	93	3,895,619
		Prelacteal feeding	87	3,848,891
13	Domestic violence	Women was often humiliated/insulted/ threatened by her spouse/partner	39	2,358,335
		Physical abuse by spouse/partner	38	2,348,849
		Physical abuse by other family members	35	2,291,448
14	Informal work	Employed in the last 7 days	54	4,587,679
		Ever employed in the last 12 months		
		Type of occupation		
		Self-employment		
		Duration of work: throughout, seasonal or occasional		
		Paid in cash/kind/no pay	49	3,106,676



# Seven Frontiers for Multidimensional Measures

1. **Data:** Missing Dimensions & Indicators, 'Joint'
2. **Topical Indices:** Child, Gendered, Worker, Well-being
3. **Policy Applications:** Targeting, Budget, Management
4. **Analysis:** Endogeneity, Accuracy, Preferences?
5. **Engagement:** Protagonists of Poverty, Public
6. **Methodology:** Hybrid, Robustness, Imputation
7. **Teamwork:** Avoiding Overload; Being user-friendly

# Components of measures to be adjusted:



# Indicators

**Required Characteristics:** recall periods, applicable population, unit-level accuracy, feasibility

**To establish new conventions: need conversation with Experts:**

- e.g. a **Child Poverty** measure for people 0-17
- **Data Again:** a pared down child MPI with global MPI + 2 indicators related to education & child protection (child labour) – only available for 20+ countries and under 2 billion people; women's MPI less than 30 and 2.5b.

# Seven Frontiers for Multidimensional Measures

1. **Data:** Missing Dimensions & Indicators, 'Joint'
2. **Topical Indices:** Child, Gendered, Worker, Well-being
3. **Policy Applications:** Targeting, Budget, Management
4. **Analysis:** Endogeneity, Accuracy, Preferences?
5. **Engagement:** Protagonists of Poverty, Public
6. **Methodology:** Hybrid, Robustness, Imputation
7. **Teamwork:** Avoiding Overload; Being user-friendly

# Policy Applications

- Budget Allocation: extend unidimensional models
  - Formulae for allocation across subnational regions
  - Allocation across sectors nationally and within regions
  - Sectoral vs Multisectoral programming
- McKinsey et al – Management plan to deliver a target

Pobreza	Línea Base PND 2008	Dato 2011	Dato 2012	Análisis	Goal
<b>MPI (Multidimensional Poverty)</b>	<b>34.7%</b>	<b>29.4%</b>	<b>27.0%</b>	●	<b>22.5%</b>
A <sup>(1)</sup> <ul style="list-style-type: none"> <li>Educational achievement (≥15 yrs)</li> <li>Literacy (≥15 yrs)</li> </ul>	58.8%	54.6%	53.1%	●	52.8%
	14.2%	12.0%	12.1%	● ★	12.0%
B <sup>(2)</sup> <ul style="list-style-type: none"> <li>School attendance (6-16)</li> <li>No school lag (7-17)</li> <li>Access to child care services (0-5)</li> <li>Children not working (12-17)</li> </ul>	5.4%	4.8%	4.1%	●	3.5%
	33.4%	34.1%	33.3%	●	33.1%
	12.1%	10.8%	9.4%	●	10.6%
	5.5%	4.5%	3.7%	●	2.9%
C <sup>(3)</sup> <ul style="list-style-type: none"> <li>Long-term unemployment</li> <li>Formal employment</li> </ul>	9.6%	9.1%	10.0%	● ★	9.3%
	80.6%	80.4%	80.0%	●	74.7%
D <sup>(4)</sup> <ul style="list-style-type: none"> <li>Health insurance</li> <li>Access to health services</li> </ul>	24.2%	19.0%	17.9%	●	0.5%
	8.9%	8.2%	6.6%	●	2.4%
E <sup>(5)</sup> <ul style="list-style-type: none"> <li>Access to water source</li> <li>Adequate sewage system</li> <li>Adequate floors</li> <li>Adequate external walls</li> <li>No critical overcrowding</li> </ul>	12.9%	12.0%	12.3%	● ★	10.9%
	14.1%	14.5%	12.1%	●	11.3%
	7.5%	6.3%	5.9%	●	5.6%
	3.1%	3.2%	2.2%	●	2.1%
	15.7%	14.2%	13.1%	●	8.4%

# Seven Frontiers for Multidimensional Measures

1. **Data:** Missing Dimensions & Indicators, 'Joint'
2. **Topical Indices:** Child, Gendered, Worker, Well-being
3. **Policy Applications:** Targeting, Budget, Management
4. **Analysis:** Endogeneity, Accuracy, Preferences?
5. **Engagement:** Protagonists of Poverty, Public
6. **Methodology:** Hybrid, Robustness, Imputation
7. **Teamwork:** Avoiding Overload; Being user-friendly