



WIDER Working Paper 2017/208

## Investigating growing inequality in Mozambique

Carlos Gradín <sup>1,\*</sup> and Finn Tarp<sup>1</sup>

December 2017

**Abstract:** In this paper, we investigate the long-term trend of consumption inequality in Mozambique. We show that an imbalanced growth path disproportionately benefited the better-off and caused increasing inequality, especially in more recent years, curbing the necessary reduction in poverty. Using a regression decomposition technique, our results suggest that this trend was strongly associated with the higher attained education of household heads and with changes in the structure of the economy (with less workers in the public and subsistence sectors). The trend was, however, mitigated by the tendency for the higher level of attained education and the smaller public sector to become associated with less inequality over time. These results point to the importance of accelerating the expansion of education and improving the productivity of the large subsistence sector to lower inequality in line with the sustainable development goals.

**Keywords:** inequality, Mozambique, decomposition, RIF

**JEL classification:** D63, I24, O55

**Acknowledgements:** We would like to thank Vincenzo Salvucci for his help.

---

<sup>1</sup> UNU-WIDER, Helsinki, Finland: \* corresponding author [gradin@wider.unu.edu](mailto:gradin@wider.unu.edu)

This study has been prepared within the UNU-WIDER project on '[Inclusive growth in Mozambique - scaling-up research and capacity](#)'.

Copyright © UNU-WIDER 2017

Information and requests: [publications@wider.unu.edu](mailto:publications@wider.unu.edu)

ISSN 1798-7237 ISBN 978-92-9256-434-6

Typescript prepared by Ans Vehmaanperä

The United Nations University World Institute for Development Economics Research provides economic analysis and policy advice with the aim of promoting sustainable and equitable development. The Institute began operations in 1985 in Helsinki, Finland, as the first research and training centre of the United Nations University. Today it is a unique blend of think tank, research institute, and UN agency—providing a range of services from policy advice to governments as well as freely available original research.

The Institute is funded through income from an endowment fund with additional contributions to its work programme from Denmark, Finland, Sweden, and the United Kingdom.

Katajanokanlaituri 6 B, 00160 Helsinki, Finland

The views expressed in this paper are those of the author(s), and do not necessarily reflect the views of the Institute or the United Nations University, nor the programme/project donors.

## 1 Introduction

Mozambique was the poorest country in the world in 1992, when the war that followed from the early 1980s after independence from Portugal in 1975, came to an end. Per capita GDP was US\$354 (2011 PPP) and poverty was widespread. Economic reforms were initiated in 1986, and recovery followed with rapid economic growth from the mid-1990s onwards, reaching a GDP per capita of US\$1,128 in 2016. Yet, the country still ranks among the poorest in the world.<sup>1</sup>

Economic growth brought a substantial reduction in poverty levels. This is so whether poverty is measured with monetary or non-monetary indicators, as reported, among others, by the last two national poverty assessments (MPD/DNEAP, 2010; MEF/DEEF, 2016). Poverty, however, continues to be high, in part, because of the persistence of economic constraints (i.e. inadequate education, trade and transport systems). They slow down further poverty reduction compared with countries, like Viet Nam, which have achieved a more pro-poor growth pattern (Arndt et al., 2012).

The sustainable development goals have made the reduction of poverty in the developing world a priority, but also the reduction of inequalities to guarantee that no one is left behind (Goal 10). Sub-Saharan Africa is amongst the most unequal regions in the world and a puzzle for traditional development economics models and the popular Kuznets' inverted-U hypothesis because it is also the least developed. This, however, implies that there is a risk that inequality increases even more during the initial stages of development of the non-subsistence sector in a region with predominantly resource-led growth. Higher levels of inequality could contribute to destabilize an extremely fragile region and undermine the effectiveness of poverty reduction strategies.

The scarce evidence for relative inequality in this region points at no clear pattern in the last decades. Inequality does not seem to have changed much on average (see review in Alvaredo and Gasparini, 2015), but is associated with large heterogeneity in levels, trends, and explanatory factors depending on initial conditions and how inclusive economic growth was, as recently pointed out in a UNDP report (Odusola et al., 2017). This report has also summarized the main driving forces of inequality in the region: i) a highly dualistic economy structure, with a large informal or subsistence economy cohabiting with a small elite working in the formal economy (i.e. public, international and resource sectors); ii) the high concentration of land and physical and human capital in certain groups and regions; and iii) a limited distributive capacity of the state, leading to the 'natural resource curse', the urban bias of public policy, and ethnic and gender inequalities.

The last two national poverty assessments in Mozambique documented an increase in consumption inequality in this country. While Mozambique's overall initial level of inequality was high according to world standards, this was not so given the African context, except for the urban areas (Fox, Bardassi, and van den Broeck, 2005). Inequality slightly increased between the first two post-war households budget surveys (1996/97 and 2002/03) to later

---

<sup>1</sup> GDP data from the World Bank, International Comparison Program database (<http://data.worldbank.org>), accessed on 11/08/2017.

remain barely constant (between 2002/03 and 2008/09).<sup>2</sup> However, a much larger increase in inequality was recently found between the last two surveys (2008/09 and 2014/15). National poverty assessments emphasized evidence of underreporting in food consumption by the poor that might imply that the actual level of inequality is lower than reported. But inequality could also be significantly higher if we take account of underreporting among the relatively better-off (Arndt and Mahrt, 2017) or how the expenditure structure differs for these households as compared with the poor (Arndt, Jones and Salvucci, 2015).

This paper contributes to the growing literature on inequality in Mozambique and, by extension, in sub-Saharan Africa. We analyse the long-term trend in inequality in Mozambique and characterize its distributional pattern. We also identify some of the underlying drivers using a regression-based decomposition technique based on the Recentered Influence Function of the Gini index. In line with Gradín (2016), we first investigate the role of several household characteristics on inequality in every year. Then, we construct a counterfactual distribution in which we combine the average characteristics of the initial year while keeping the impact of these on inequality that prevailed in the final year. Using this counterfactual, we decompose the overall change in inequality over time into two terms. One is the change in inequality that can be attributed to a change in the composition of the population by characteristics (characteristics or explained effect). The other is the change in inequality that can be attributed to the change in the relationship between these characteristics and inequality (coefficients or unexplained effect).

In what follows, the next section describes the data and main variables used, while Section 3 discusses the latest trends in inequality. Section 4 introduces the decomposition methodology while Section 5 presents the empirical results. The last section concludes.

## 2 Data and variables used in the analysis

The empirical analysis is based on the four nationally representative households budget surveys collected by the *Instituto Nacional de Estatística* (INE) after the end of the post-independence war: the *Inquéritos aos Agregados Familiares* (IAF) for 1996/97 and 2002/03, and the *Inquéritos ao Orçamento Familiar* (IOF) for 2008/09 and 2014/15.

We use daily real per capita consumption as our main indicator of individual wellbeing, although nominal consumption will also be used for robustness analysis. Consumption is usually preferred to income in inequality analyses in developing countries, especially in the sub-Saharan region. We use here the same indicator constructed for the Fourth National Poverty Assessment (MEF/DNEAP, 2016) based on the PLEASE methodology (see Arndt et al., 2017a for details). To obtain real consumption, nominal consumption in each survey is adjusted to correct for seasonal and spatial variation in prices using price indices computed separately for 13 geographical regions.

IAF/IOF surveys have been the main source for the analysis of wellbeing in Mozambique. They have, however, suffered from a variety of limitations in the collection of data, shared with other large developing countries and aggravated by the lasting consequences of the

---

<sup>2</sup> Elbers et al. (2005) showed that in Mozambique, like in Ecuador and Madagascar, most inequality in 1996/97 was within the small administrative units. The change in inequality between 1996/97 and 2002/03 has been analysed, for example, by James et al. (2005), and by Fox, Bardassi, and van den Broeck (2005), using decompositions by different population subgroups.

conflict, such as the lack of infrastructure, the presence of land mines, market fragmentation, flooding in certain areas, the use of non-standard unit measures, etc. (Arndt et al., 2017b). The surveys are also associated with the well-known problem of under-reporting of food consumption that has been aggravated in the most recent one. Initially confined to urban areas in the South, it is now affecting rural areas too (MEF/DNEAP, 2016). This underreporting is in part related to infrequent purchases, especially of rice and cornflour. Like most household surveys, IAF/IOF also suffer from underestimation of top values due to underrepresentation and/or under-reporting of consumption by relatively well-off households (Arndt and Mahrt, 2017).

In the first three surveys, we have information about consumption for a total of respectively 8,250, 8,700, and 10,832 households interviewed once over four quarters. They account for a total of 42,667, 44,083, and 51,177 individuals respectively. The design of the most recent survey is different. We have information for around 11,000 households that were interviewed in different quarters between August 2014 and July 2015 (11,505 in the first quarter, 10,372 in the second one, and 11,315 in the fourth quarter). In this last case, we use the pool of individuals in all available quarters (58,342, 50,770, and 55,198 respectively). Consumption and characteristics in each year are estimated at the household level, the final sampling unit, while inequality and its drivers are estimated for the sample of individuals. For that reason, robust standard errors are estimated in all cases using households as clusters.

To explain changes in inequality over time, we consider several characteristics of households available in these surveys that may have influenced their consumption levels. We account for economic opportunities varying by location using information about the area (rural or urban)<sup>3</sup> and province of residence (Niassa, Cabo Delgado, Nampula, Zambezia, Tete, Manica, Sofala, Inhambane, Gaza, Maputo, and Maputo City). Demographic variables considered include the number of children (aged 14 or less) and adults in the household, as well as the marital status (single, married, widowed, separated or divorced), age (in brackets), and sex of the household head.<sup>4</sup> We also considered the education attained by the household head. Several variables accounted for the employment status of the household head. We used information on whether the head is employed in the non-subsistence sector, operationalized here as remunerated work (not being a family helper) outside the primary sector, working in another job, or not employed. We also consider whether the head is self-employed or works in the public sector.<sup>5</sup> Finally, we included the employment rate of household adults (the number of employed adults in the household divided by the number of adults, taking the value zero in the few cases in which there were no adults at all).

### 3 Trends in inequality

The densities of real per capita consumption for the different years are displayed in Figure 1. We divide consumption by the official poverty line. This deflator allows us to describe the change in household purchasing power of a (flexible) basket of basic food and non-food

---

<sup>3</sup> The definition of urban area in 1996/97 is narrower than in the subsequent surveys. Consistent definitions of area were used for comparing 1996/97 with 2002/03, and the latter with subsequent surveys.

<sup>4</sup> In the regressions, we will not use a few observations with unknown age and sex of the household head.

<sup>5</sup> We also included a dummy to control for cases in which the household head was employed while the industry was unknown.

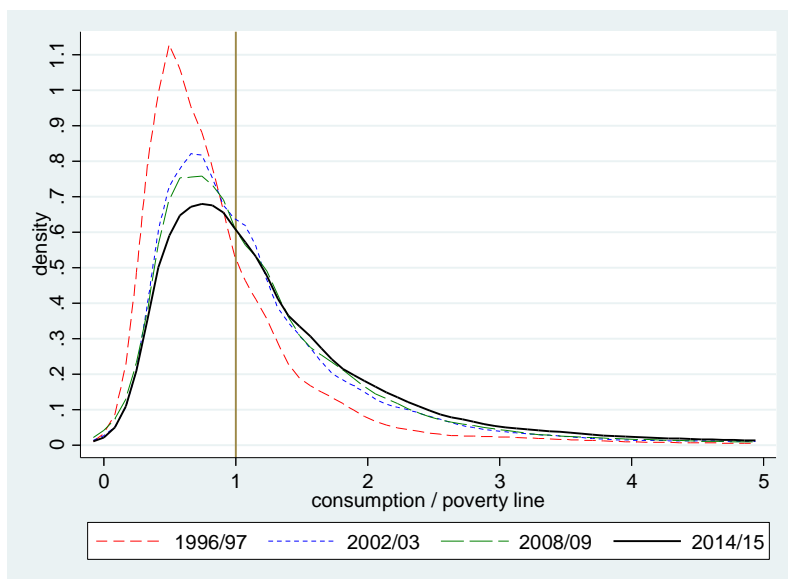
goods over time.<sup>6</sup> Mean consumption values and several quantiles are reported in Table A1 in Appendix B. Real per capita consumption increased by two thirds over the entire 1996/97-2014/15 period, corresponding to an average annual growth rate of 3.7 per cent. Yet, this rate was not homogeneous in the different subperiods. The average annual growth rate was 5.9 per cent between 1996/97 and 2002/03. Hereafter, consumption remained almost constant until 2008/09 (0.2 per cent), to increase again at an annual average rate of 3.6 per cent until 2014/15.

Increases in real per capita consumption took place across the entire distribution. The densities shifted to the right, consistent with the well-established reduction in the incidence and intensity of poverty. The official poverty rate declined from 70 per cent in 1996/97 to 46 per cent in 2014/15 in two steps: it sharply went down from 70 per cent in 1996/97 to 53 per cent in 2002/03, with a more modest decline (from 52 to 46 per cent) between 2008/09 and 2014/15 (see MEF/DNEAP, 2016 for a more detailed analysis of poverty). This was accompanied by an initial decline in the intensity of poverty too. The median poverty gap, according to our own calculations, declined from 43 to 35 per cent of the poverty line in the first period, remaining at this level thereafter.

---

<sup>6</sup> The Consumption Price Index in Mozambique is only estimated using prices in a few urban areas. Poverty lines in contemporary currency (in parentheses 2011 PPP using the World Bank GDP deflator) are MZM 5,502 (US\$1.13) in 1996/97, MZM 8,307 (US\$0.95) in 2002/03, MZN 17.93 (US\$1.37) in 2008/09, and MZN 29.19 (US\$1.76) in 2014/15. The use of a common deflator (regardless of the level of consumption) is a rather conservative approach. Arndt, Jones and Salvucci (2015) have recently shown that the increase in inequality between 2002/03 and 2008/09 was 0.030 Gini points higher when using a composite household-specific price index that is sensitive to differences in the structure of consumption of the relatively well-off and the poorer households.

Figure 1: Daily real per capita consumption: densities

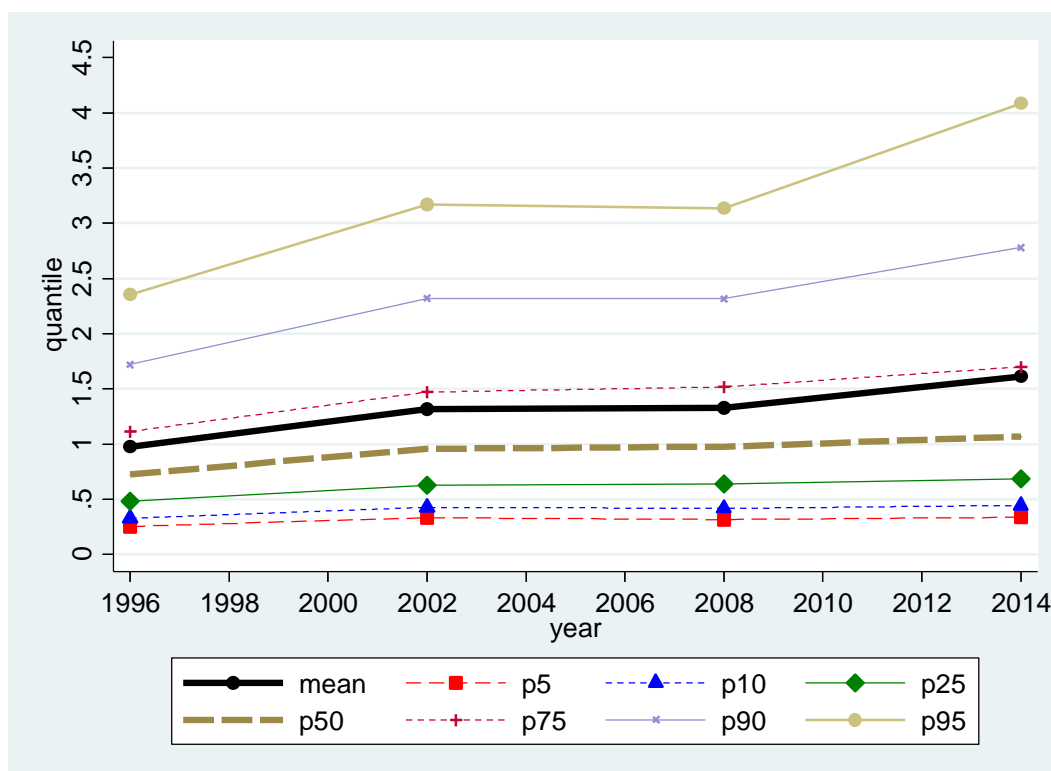


Note: Consumption values are expressed normalized by the contemporary poverty line.

Source: Authors' calculations based on IAF/IOF.

The increase in real per capita consumption exhibited, however, a clear pattern disproportionately benefitting the relatively well-off as shown in Figure 2. This is in line with earlier results (e.g. James et al., 2005 for 1996/97–2002/03), but was accentuated during the last period. Growth in consumption was largest for the highest percentiles in both absolute and relative terms. While real consumption grew by 73 per cent for the 95<sup>th</sup> percentile over the entire period, the median grew by 47 per cent, and the 5<sup>th</sup> percentile only grew by 33 per cent. There are different patterns across periods, though, with the highest growth for the well-off occurring during the last subperiod. This inequality increase is also illustrated by the increase in the p50/p10 and p90/p50 ratios (respectively from 2.2 to 2.4 and from 2.4 to 2.6), with the bulk of the increase in the last period.

Figure 2. Daily real per capita consumption: mean and quantiles



Note: Consumption values are expressed normalized by the contemporary poverty line.

Source: Authors' calculations based on IAF/IOF.

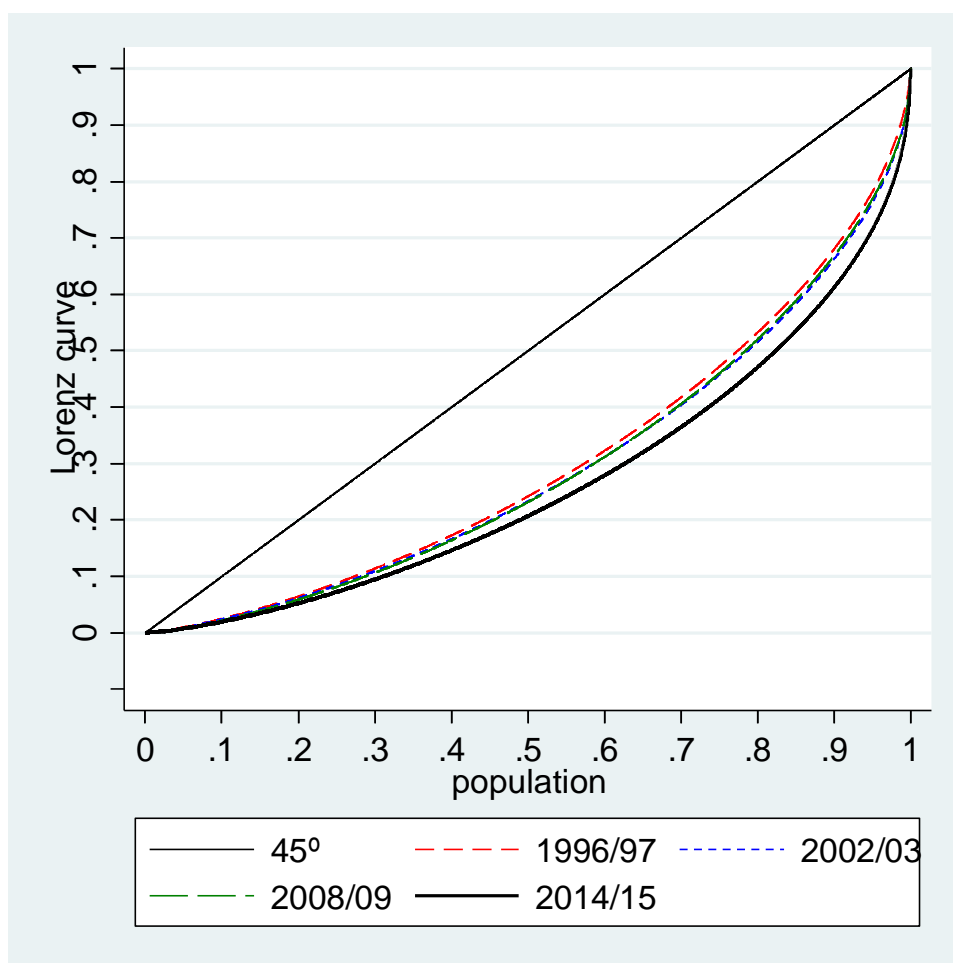
The non-overlapping empirical Lorenz curves shown in Figure 3, not surprisingly, reveal an unambiguous increase in inequality in both periods of consumption growth (1996/97–2002/03 and, especially, 2008/09–14/15). Lorenz dominance was statistically significant in both periods (Table A9).<sup>7</sup> Less obvious is the trend in the intermediate period of stagnation in consumption (2002/03–08/09). While the 2008/09 curve crosses the 2002/03 one from below around the 65<sup>th</sup> percentile, the cross is not statistically significant (while the difference between both curves is statistically significant only below the 13<sup>th</sup> percentile). This implies also an increase in inequality in this period according to the Lorenz criterion. For the entire period, the most recent Lorenz curve falls entirely below the earliest one, with the differential being statistically significant at all percentiles.

The increase in inequality is corroborated using a variety of inequality indices, like Gini, and the Generalized Entropy and Atkinson families, all of them consistent with Lorenz dominance (see technical note in Appendix A).

<sup>7</sup> The 2002/03 curve is below the 1996/97 curve everywhere, but only with high statistical significance (at 90 or 95%) in the upper tail. The 2014/15 curve falls below that of 2008/09 for all percentiles, being statistically significant (95 per cent) above the 7<sup>th</sup> percentile. See Table A9.



Figure 3. Lorenz curves of real per capita consumption



Source: Authors' calculations based on IAF/IOF.

The Gini index of real per capita consumption increased by 4.6 per cent in the 1996/97–2002/03 period, and by 12.7 per cent in the 2008/09–14/15 period, remaining constant in between (-0.1 per cent between 2002/03 and 2008/09), as displayed in Figure 4 and Table A1. The increase in inequality, as measured by the Gini index, over the entire period was 17.8 per cent.<sup>8</sup>

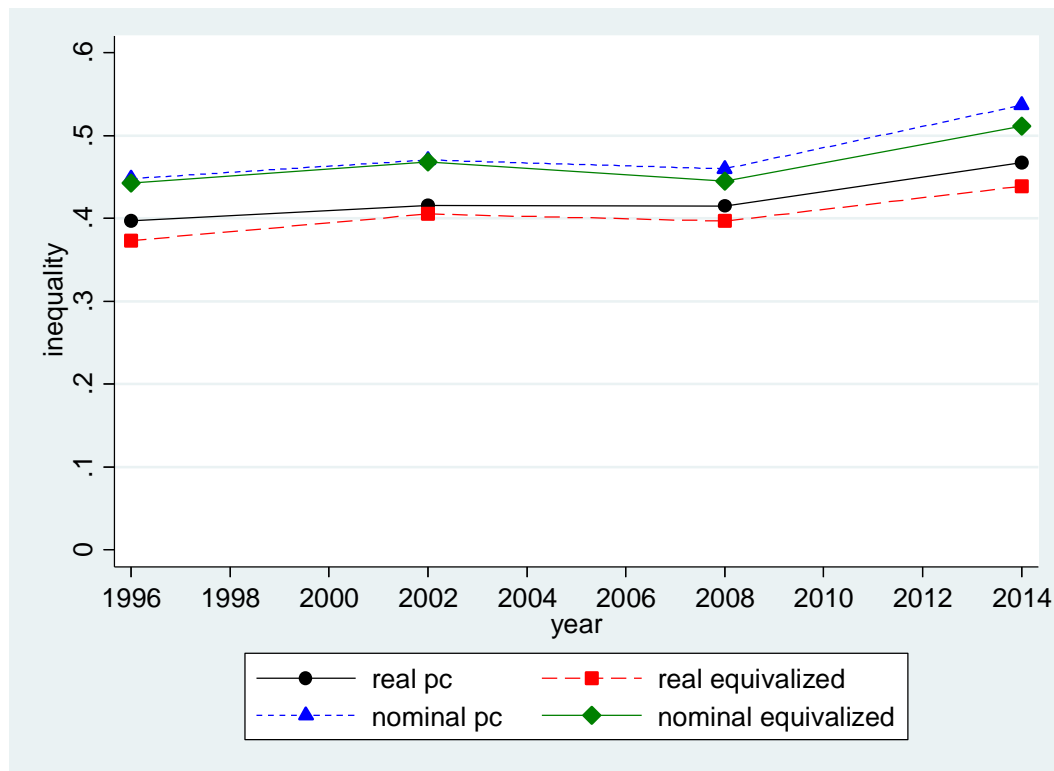
Figure 4 shows the trend in the Gini index using four alternative wellbeing indicators, with real and nominal consumption (no adjustment for spatial and temporary variation in prices), and in each case with per capita and per adult equivalent (using the square root of household members) – see Tables A1–4 in Appendix B. The Gini index is substantially higher when consumption is nominal instead of real (reflecting the important geographical differences in prices). It is slightly lower, however, when it is equalized instead of per capita (the Gini index follows here the well-known U-pattern with the economies of scale assumed). The global trend, however, is similar although with different intensities. The total increase in inequality ranges between 16–20 per cent, corresponding to 5–9 per cent during the first

<sup>8</sup> Changes in Gini of real per capita consumption inequality over time are all statistically significant using bootstrap standard errors (bias-corrected 95 per cent confidence intervals), except between 2002/03 and 2008/09 (see Table A1).

period, and 11–17 per cent in the last period. Inequality declines in the intermediate period between 0–5 per cent, depending on the case.<sup>9</sup>

Arndt and Mahrt (2017) have recently shown that re-scaling consumption by discrepancies with National accounts would increase the level of inequality as measured by the Gini index. It would also affect the trend (with a higher increase between 2002/03 and 2008/09, and a lower increase in the last period). In the opposite direction, a correction for under-reporting in food consumption in 2014/15 (based on meals reported by households that are not reflected in their consumption) would reduce the level of inequality in that year. Although one could expect this reduction to be larger than in previous years, the effect on the trend cannot be computed due to lack of the necessary information.<sup>10</sup>

Figure 4: Gini index of consumption inequality, alternative consumption estimates



Note: Real consumption is nominal consumption adjusted using intra-survey temporary and spatial price indices. The square root of household size was used to estimate the corresponding equivalized values.

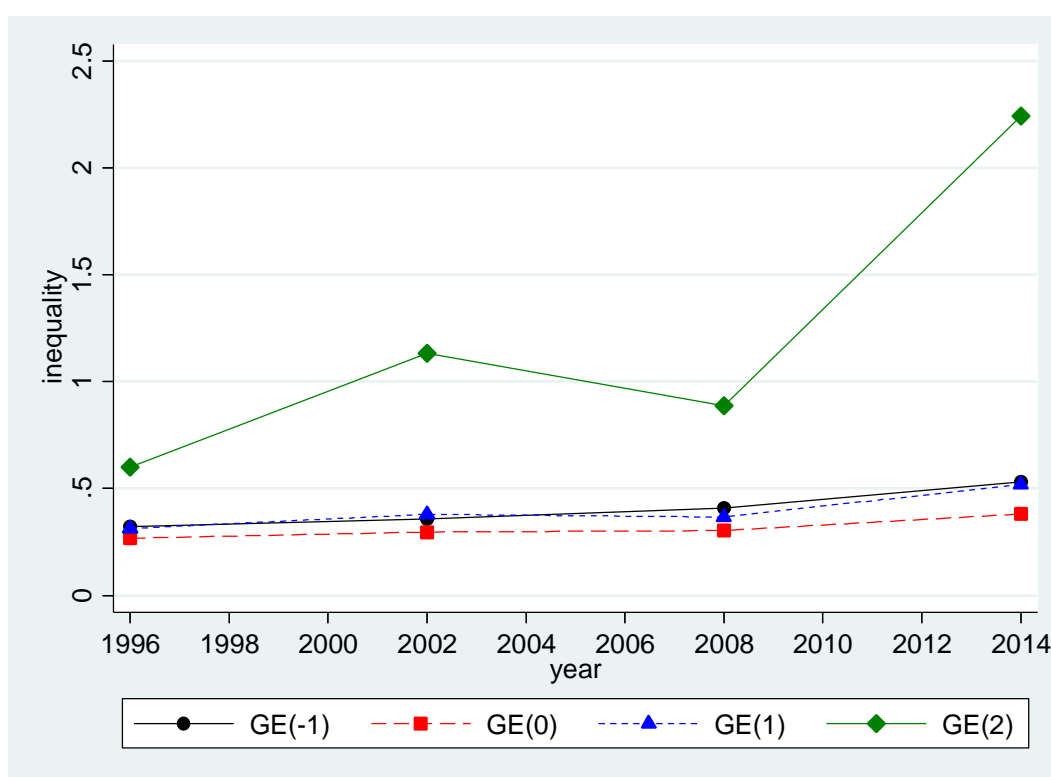
Source: Authors' calculations based on IAF/IOF.

<sup>9</sup> The respective changes in the Gini index for each period are 8.6%, -2.1%, and 10.6% for real equivalized consumption, and 5.1%, -2.3%, and 16.7% for nominal per capita consumption.

<sup>10</sup> According to our own calculations, the Gini in 2014/15 would be smaller by between 0.004 and 0.020, depending on the assumptions made (for the methodology used in adjusting consumption for under-reporting, see MEF/DEEF, 2016).

The Generalized Entropy (Figure 5) and Atkinson (Figure 6) families of measures also show a unanimous increase in inequality in real per capita consumption during the initial and, especially, during the last period. These indices also help to better characterize the distributional pattern of the inequality increase. They confirm that these increases in inequality tend to be larger with higher sensitivity of the indices to top consumption values (smaller inequality aversion  $\epsilon$  and higher  $\alpha$ ). In this line, the increase in inequality using the  $GE(2)$  is remarkable. In the last period, there was also an important increase in inequality with higher sensitivity to the bottom of the distribution, likely the result of the under-reporting of food consumption mentioned above. In the intermediate 2002/03–08/09 period, on the contrary, there is an increase or a decline in inequality depending on whether we put more weight on inequality among the poor or the better-off respectively (inequality declines for  $\epsilon \leq 0.5$ ;  $\alpha \geq 1$ , increases otherwise), which does not come as a surprise due to the crossing empirical Lorenz curves.<sup>11</sup>

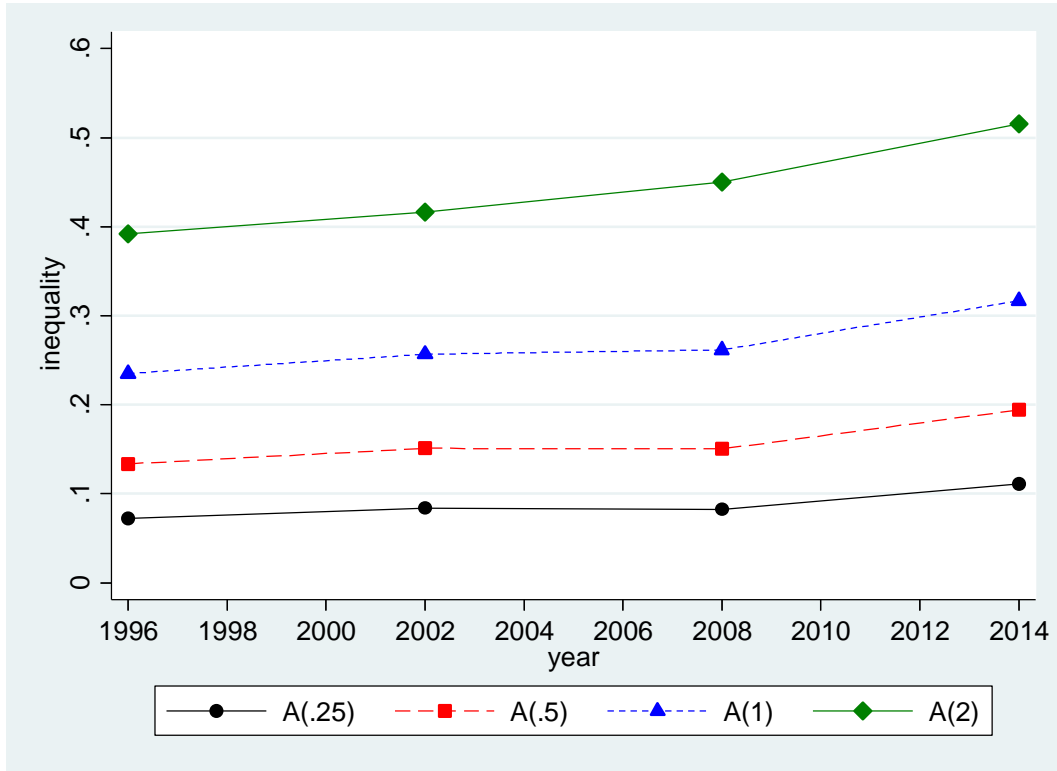
Figure 5: General Entropy indices of real per capita consumption inequality



Source: Authors' calculations based on IAF/IOF.

<sup>11</sup> Changes in Atkinson and GE indices of real per capita consumption inequality over time are all statistically significant at 95% using bootstrap standard errors (bias-corrected confidence intervals), except between 2002/03 and 2008/09, in which case only  $GE(-2)$ ,  $GE(-1)$  and  $A(2)$  show statistically significant increases (see Table A1).

Figure 6: Atkinson indices of real per capita consumption inequality



Source: Authors' calculations based on IAF/IOF.

#### 4 Methodology: decomposing inequality changes over time

Let  $\mathbf{y} = (y_1, \dots, y_N)$  indicate a vector of consumption across a population of  $N$  individuals. We will measure inequality using the Gini index,  $I(\mathbf{y})$ . We assume that the contribution of the  $i$ th individual to overall inequality  $I(\mathbf{y})$  is given by the recentered influence function of  $I$ , estimated for consumption  $y_i$ ,  $RIF(y_i; I)$  (Firpo, Fortin, and Lemieux, 2007, 2009). The  $RIF$  measures the impact on the target statistic of a contamination at  $y_i$ , with overall inequality being just the average of all individual contributions,  $I(\mathbf{y}) = E(RIF(y; I))$ .<sup>12</sup>

The relationship between these individual contributions to inequality and household characteristics is given by a  $N \times K$  matrix  $X$  (including a constant) that can be estimated by OLS:<sup>13</sup>

$$RIF(y_i; I) = \sum_{k=1}^K \bar{x}_k \beta_k + \varepsilon_i. \quad (1)$$

<sup>12</sup> Let us consider a mixture distribution that assigns a probability  $\varepsilon$  of having a mass 1 at  $y_i$  and  $1 - \varepsilon$  of being the original distribution. The influence function  $IF$  is the directional derivative of  $I$  for this mixture distribution when  $\varepsilon \rightarrow 0$ , and has zero expectation (Hampel, 1974). By just adding the value of the target statistic, we obtain the  $RIF$ .

<sup>13</sup> The  $IF$  for the Gini index was first documented in Monti (1991).

We can interpret  $\beta_k$ ,  $k \geq 2$ , as the expected effect on inequality of a marginal change in the average value of the  $k$ th characteristic,  $\bar{x}_k$ ; while  $\beta_1$  reflects the expected value of inequality when  $x_k = 0$ ,  $k \geq 2$ . In the case of dummy variables, this means that  $\beta_k$  measures the marginal impact of a slight increase in the proportion of individuals with  $x_k = 1$ , and  $\beta_1$  the expected value of inequality for the reference household (defined by the omitted categories).

We can thus re-write  $I(\mathbf{y})$  as the sum of the impact of household characteristics on inequality:

$$I(\mathbf{y}) = \sum_{i=1}^N RIF(y_i; I) = \bar{X}'\beta = \sum_{k=1}^K \bar{x}_k \beta_k. \quad (2)$$

The counterfactual inequality index  $I^{01}(\mathbf{y}) = \bar{X}^{0'}\beta^1$  indicates the expected value of inequality in the final year if the characteristics remained constant over time (superscripts 0 and 1 refer to the initial and final year respectively). With this counterfactual, we can decompose the change in inequality over time into two distinct contributions:

$$I^1(\mathbf{y}) - I^0(\mathbf{y}) = \bar{X}^{1'}\beta^1 - \bar{X}^{0'}\beta^0 = (\bar{X}^{1'} - \bar{X}^{0'})\beta^1 + \bar{X}^{0'}(\beta^1 - \beta^0). \quad (3)$$

The coefficients effect,  $\bar{X}^{0'}(\beta^1 - \beta^0)$ , indicates the change in inequality we would expect if starting at the initial year we change the impact of characteristics while keeping constant their average values (that is, we shift to the counterfactual distribution). The characteristics effect,  $(\bar{X}^{1'} - \bar{X}^{0'})\beta^1$ , indicates the additional change after changing also the average value of characteristics (shifting from the counterfactual to the final distribution). This is the compositional effect valued using the  $\beta^1$ .

Therefore, the evaluation of the individual contribution of each variable  $x_k$  to the characteristics and coefficients effects can be measured as  $W_k^{\Delta X} = (\bar{x}_k^1 - \bar{x}_k^0)\beta_k^1$  and  $W_k^{\Delta \beta} = \bar{x}_k^0(\beta_k^1 - \beta_k^0)$ , so that the individual effects sum up the corresponding aggregate effects. Similarly, the sums of the characteristics and coefficients effects of each characteristic add up to the total contribution of that same characteristic,  $W_k^{\Delta X \beta} = W_k^{\Delta X} + W_k^{\Delta \beta}$ . Note that when the target statistic is the average of  $y$ , this procedure would lead to the one proposed by Blinder (1973) and Oaxaca (1973).

The detailed coefficients effects, however, suffer from a well-known identification problem (Oaxaca and Ransom, 1999). The contribution of each dummy variable depends on which is the omitted category, and the contribution of continuous variables depends on the chosen scale. We do not make any correction because all available adjustments in the literature are ad-hoc (Fortin, Lemieux, and Firpo, 2011). Neither the detailed characteristics effects nor the aggregate effects are affected by this identification problem.

Alternatively, we use a different counterfactual,  $I^{01}(\mathbf{y}) = \bar{X}^{1'}\beta^0$ , changing the sequence to shift from the initial to the final distribution:

$$I^1(\mathbf{y}) - I^0(\mathbf{y}) = \bar{X}^{1'}\beta^1 - \bar{X}^{0'}\beta^0 = \bar{X}^{1'}(\beta^1 - \beta^0) + (\bar{X}^{1'} - \bar{X}^{0'})\beta^0. \quad (4)$$

Starting from the initial distribution, we first change the average characteristics. The change in inequality is the characteristics effect, second term in (4). Then, we change the coefficients, obtaining the coefficients effect. The difference between this decomposition and that in (3)

is that now the coefficients effect is valued with the final average characteristics, while the characteristics effect uses the initial coefficients.

## 5 Explaining the inequality trends

We now investigate the trends of inequality in Mozambique in two steps. We first identify the extent to which household characteristics are associated with inequality. Those attributes, *ceteris paribus*, with higher impact on consumption at the extremes of the distribution, especially at the very top, will tend to be more strongly associated with higher inequality. Then, we estimate their contribution to the increase in inequality over time, either through a compositional effect (changes in the proportions) or through a change in their relationship with inequality.

### 5.1 Household characteristics and inequality

The RIF regressions, reported in Table 1, show that inequality in 2014/15 tends to be strongly increasing with the proportion of people living in Maputo City, and to a lower extent in other urban areas. This points to the fact that inequality in Mozambique is closely related with higher inequality in urban areas (higher than in other African countries, see Fox, Bardassi, and Van den Broeck, 2005) and to the large urban-rural gap, even after controlling for other characteristics like education or predominance of the subsistence sector. While inequality in rural areas is 0.373, it is 0.552 in urban areas, with the highest level of 0.582 in Maputo City, in contrast with the lowest level of 0.312 in rural Tete. There is also a large gap between the average real consumption of urban and rural areas: 1.3 times the poverty line in rural areas versus 2.4 in urban areas, with the highest level in Maputo (4.5) and the lowest in rural Niassa (1.0).

Inequality in 2014/15 tends to decline with the average number of household members (especially, adults), and to increase with the proportion of people living in households with an older household head, single, and especially with attained upper secondary or higher education. The education effect is again the result of higher between-group gaps, with average real consumption 7.6 times the poverty line when the household head has higher education, compared with only 1.2 when they have less than primary education. It is also the result of higher education generating more within-group inequality. The Gini index is 0.566 among those with a head with higher education, and 0.379 when the head has only achieved lower primary education.

Regarding the labour market status, inequality is reduced with employment of the household heads in the subsistence sector and, especially, in the public sector, and increases with the employment rate of household members. There is a major difference in the average consumption by sector (2.5 times the poverty line if the head works in the non-subsistence sector, 1.2 in the subsistence sector), and in within-group inequality as well (Gini is 0.512 versus 0.361 respectively). These results do however seem to vanish after controlling for other characteristics like education or area of residence.

Some of the above effects have intensified over time, especially the dis-equalizing effect associated with the proportion of people living in Maputo City, and the equalizing effect of the head working in the public sector. The dis-equalizing effect of having some college education in increasing inequality declined after 2002/03.

At the same time, there was a change in the composition of households by characteristics over time (Table 2). There was a redistribution of population by provinces (with population increases in Tete and Manica, and declines in Sofala, Inhambane, Gaza, or Maputo City). This was accompanied by a decline in the average number of adults, an increase in the average number of children and in the proportion of people living in household with middle-aged, divorced, or female heads. There was also a general increase in attained education of household heads, along a reduction of self-employed, and workers in the public sector (from 11 to 6 per cent) or in the subsistence sector (from 70 to 62 per cent).

Table 1. RIF Regressions, 1996–2014

	1996/97		2002/03		2002/03		2008/09		2014/15	
	Estimate	SE	Estimate	SE	Estimate	SE	Estimate	SE	Estimate	SE
<b>Area</b>										
Urban 1996	0.055*	0.022	-0.020	0.032	---	---	---	---	---	---
Urban	---	---	---	---	0.053*	0.026	0.031	0.021	0.053**	0.017
<b>Province</b>										
Niassa	-0.048	0.029	0.003	0.028	0.014	0.029	0.168***	0.049	-0.091**	0.032
Cabo Delgado	-0.014	0.034	0.085	0.063	0.093	0.067	0.055*	0.026	-0.116***	0.031
Nampula	-0.009	0.033	-0.011	0.026	-0.012	0.026	0.118**	0.038	-0.086*	0.034
Zambezia	-0.063*	0.027	0.002	0.025	0.017	0.028	0.120***	0.030	-0.090**	0.031
Tete	-0.012	0.027	0.036	0.024	0.047	0.026	0.058*	0.026	-0.129***	0.031
Manica	0.026	0.037	0.015	0.027	0.020	0.028	0.050*	0.024	-0.109***	0.032
Sofala	0.060*	0.027	0.090*	0.037	0.092*	0.038	0.142***	0.026	-0.034	0.034
Inhambane	-0.008	0.027	0.112***	0.024	0.127***	0.026	0.111***	0.025	-0.059	0.032
Gaza	-0.026	0.031	0.015	0.029	0.025	0.030	0.143***	0.025	-0.032	0.031
Maputo City	0.005	0.042	0.108**	0.038	0.088*	0.037	0.184***	0.038	0.413***	0.066
<b>Household size</b>										
N. adults	0.002	0.004	-0.001	0.004	-0.001	0.004	-0.001	0.006	-0.027***	0.005
N. children	-0.004	0.004	-0.009*	0.004	-0.009*	0.004	-0.009*	0.004	-0.008**	0.003
<b>Age (head)</b>										
25-34	-0.029	0.027	0.033	0.032	0.034	0.033	0.046	0.024	-0.02	0.017
35-44	0.000	0.028	0.04	0.033	0.04	0.033	0.064*	0.025	0.035	0.018
45-54	-0.004	0.028	0.058	0.031	0.057	0.031	0.089***	0.024	0.065**	0.024
55 or older	0.009	0.027	0.096**	0.031	0.096**	0.031	0.081***	0.023	0.071**	0.024
<b>Sex (head)</b>										
Female	0.012	0.025	0.010	0.019	0.006	0.019	0.016	0.020	-0.015	0.025
<b>Marital status (head)</b>										
Single	0.082*	0.037	0.144*	0.059	0.140*	0.059	0.215	0.118	0.097*	0.044
Divorced	0.002	0.026	0.031	0.021	0.025	0.021	0.003	0.020	-0.021	0.028
<b>Attained education (head)</b>										
Some/lower primary	0.014	0.016	0.021	0.018	0.013	0.018	-0.018	0.010	-0.030***	0.009
Upper primary	0.126***	0.036	0.139*	0.064	0.122*	0.058	0.025	0.024	-0.001	0.013
Lower secondary	0.454***	0.100	0.342***	0.079	0.333***	0.078	0.168*	0.078	0.114***	0.025
Upper secondary	0.478*	0.241	0.847***	0.165	0.826***	0.163	0.456***	0.083	0.455***	0.069
Technical	0.506***	0.137	0.641***	0.148	0.628***	0.147	0.412***	0.111	0.558***	0.095
Higher	2.071***	0.492	3.061**	0.972	3.063**	0.969	1.738***	0.325	1.690***	0.150
Literate	-0.013	0.012	0.021	0.012	0.019	0.012	-0.002	0.010	-0.019**	0.007
<b>Employment</b>										
Public sector (head)	-0.049	0.033	-0.143*	0.070	-0.136*	0.069	-0.154***	0.047	-0.409***	0.061
Self-employed (head)	0.017	0.025	0.007	0.043	0.016	0.043	0.005	0.035	0.017	0.014
Subsistence sector (head)	-0.006	0.031	-0.057	0.051	-0.058	0.051	-0.063	0.053	-0.066*	0.028
Another occupation (head)	0.037	0.036	0.047	0.038	0.027	0.038	0.021	0.043	-0.059*	0.028
Missing sector (head)	0.061	0.093	-0.103	0.055	-0.098	0.056	-0.096	0.111	0.010	0.206
Employment rate (household)	-0.027	0.028	0.118**	0.042	0.141**	0.048	0.102	0.053	0.050	0.027
<b>Intercept</b>	<b>0.404***</b>	<b>0.042</b>	<b>0.230***</b>	<b>0.052</b>	<b>0.188**</b>	<b>0.062</b>	<b>0.186***</b>	<b>0.056</b>	<b>0.572***</b>	<b>0.041</b>
<i>N Observations</i>	42,143		44,083		44,083		51,175		164,359	
<i>R</i> <sup>2</sup>	5.0		8.0		8.0		10.7		7.6	
<i>F</i>	7.25***		9.08***		9.26***		7.49***		14.01***	

Note: p-values: \* <0.05; \*\* <0.01; \*\*\* <0.001.

Source: Authors' calculations based on IAF/IOF.



Table 2. Distribution of characteristics, 1996/97–2014/15

Proportion of the population, except for household size

	1996/97	2002/03	2008/09	2014/15
<b>Area</b>				
Urban (1996-2002)	0.210	0.198	-----	-----
Urban (2002-2014)	-----	0.321	0.304	0.317
<b>Province</b>				
Niassa	0.050	0.051	0.059	0.064
Cabo Delgado	0.077	0.084	0.078	0.074
Nampula	0.188	0.188	0.192	0.195
Zambezia	0.193	0.192	0.190	0.188
Tete	0.068	0.077	0.090	0.098
Manica	0.057	0.067	0.070	0.075
Sofala	0.101	0.084	0.081	0.079
Inhambane	0.073	0.074	0.061	0.058
Gaza	0.070	0.070	0.063	0.055
Maputo province	0.057	0.056	0.063	0.066
Maputo city	0.066	0.057	0.052	0.049
<b>Household size</b>				
N. adults	3.150	3.122	2.844	2.994
N. children	3.050	3.094	3.112	3.224
<b>Age (head)</b>				
Less than 24	0.068	0.061	0.064	0.060
25-34	0.234	0.255	0.265	0.224
35-44	0.264	0.269	0.264	0.289
45-54	0.216	0.198	0.212	0.211
55 or older	0.218	0.217	0.196	0.217
<b>Sex (head)</b>				
Female	0.174	0.205	0.242	0.242
<b>Marital status (head)</b>				
Married, union (or unknown)	0.850	0.820	0.818	0.808
Single	0.028	0.015	0.015	0.032
Divorced, separated, widow(er)	0.122	0.166	0.166	0.160
<b>Attained education (head)</b>				
None/unknown	0.690	0.697	0.255	0.315
Some/lower primary	0.242	0.177	0.552	0.439
Upper primary	0.051	0.069	0.126	0.139
Lower secondary	0.009	0.031	0.031	0.041
Upper secondary	0.002	0.015	0.016	0.033
Technical	0.005	0.008	0.008	0.007
Higher	0.001	0.003	0.012	0.025
<b>Literate (head)</b>	0.522	0.544	0.553	0.568
<b>Employment</b>				
Public sector (head)	0.112	0.077	0.063	0.058
Self-employed (head)	0.719	0.797	0.784	0.685
Subsistence sector (head)	0.700	0.688	0.714	0.617
Another sector (head)	0.219	0.268	0.248	0.283
Missing sector (head)	0.008	0.001	0.001	0.000
Employment rate (household)	0.805	0.834	0.881	0.782

Source: Authors' calculations based on IAF/IOF.

## 5.2 Decomposing changes in inequality

In the previous section we established the trend towards higher inequality that was the combined effect of changes in characteristics and the marginal impact they had on inequality. Table 3 reports the decomposition of the change in overall inequality over time into the characteristics and coefficients effects following the approach previously described. It turns out that the entire increase in the Gini index between 1996/97 and 2014/15 can be explained by a compositional effect evaluated with the latest survey's estimated coefficients. Indeed, the entire increase in inequality can be explained by the higher education of household heads

(0.053 or 75 per cent of the total change) and the declining public sector (0.022 or 31 per cent).<sup>14</sup> Other factors that significantly contributed to increasing inequality were the declining employment in the subsistence sector (7 per cent) and the smaller number of adults (6 per cent) or the larger of single heads (2 per cent).<sup>15</sup> These inequality-enhancing changes in characteristics were compensated by other changes that helped to mitigate the increase. They include changes in the distribution of the population by province (with a contribution of -17 per cent), or the increase in the average number of children per household (-2 per cent).

Apart from these compositional changes, there were also changes in the relationship between these characteristics and inequality. The net coefficients or unexplained effect is negligible and statistically insignificant. However, this is the result of some negative and significant effects compensated by a larger intercept. More specifically, we find a significant and substantial negative coefficients effects associated with heads' education, heads working in the public and non-subsistence sectors, and the number of adults. These effects are the result of these characteristics being associated with less inequality in 2014/15 compared with 1996/97.<sup>16</sup> That is, the impact on inequality of higher education or a smaller public sector was mitigated by these facts becoming less dis-equalizing over time. The only positive and significant effect is associated with the household employment rate, a dis-equalizing factor in 2014/15 that had an equalizing effect in 1996/97.

A closer look at the decomposition in Table 3, brings out the fact that education played a fundamental role in explaining increasing inequality in all periods. Its effect was larger than the increase in inequality observed in 1996/97–2002/03, and it explained 64 per cent of the rise between 2008/09 and 2014/15. Nevertheless, the absolute increase in the last period (0.034) was larger than the contribution during the first period (0.027). In the last period, other factors significantly contributed to increasing inequality, like the decline in the subsistence sector (12 per cent) and some demographic changes (higher proportion of single heads, 3 per cent, or age structure, 6 per cent). The reduction in the number of adults contributed to reducing inequality (by 8 per cent). Regarding the coefficients effect, we see that the effect of the household employment rate occurred in the first period. The negative coefficients effect of education took place in the intermediate period, when education became less associated with inequality (as opposed to the positive effect during the first period, and the negative but statistically not significant effect in the last one). The coefficients effects associated with the public sector and number of adults occurred in the last period, however.

Table A6 in Appendix B shows that the results for the 1996/97–2014/15 period (using the RIF regressions in A5) are very similar had we used nominal instead of real consumption. The increase in inequality (0.089) can be explained by the combination of higher education (0.061) and the decline in the public (0.026) and subsistence sectors (0.05). However, in this

---

<sup>14</sup> Odusola et al. (2017) included the public sector among the skilled labor sectors that tend to raise inequality in sub-Saharan countries (along mining, finance, insurance, and the real estate). In the Mozambican case, it seems that it was the reduction in this sector that contributed to increase inequality, instead.

<sup>15</sup> While the difference in the proportion of urban population contributes with 8%, we know that the variables are not entirely comparable in both years, and the changes between comparable years point to this factor not being especially relevant to explain the increasing inequality.

<sup>16</sup> This is consistent with the regressions of (log-)consumption on the same set of characteristics showing returns of attained education of the head in 2014/15 lower than in 1996/97 (but slightly higher than in 2008/09). See Table A8.

case the total explained component is around 82 per cent of the total change, due to a larger unexplained effect (captured by the intercept).

Finally, with the alternative counterfactual (Table A7) in which we evaluate the change in characteristics using the initial values of the coefficients, the explained effect for the increase in real consumption between 1996/97 and 2014/15 is even larger (higher than 100 per cent<sup>17</sup>), with a much stronger contribution from education (due to the more dis-equalizing effect of this characteristic in 1996/97) and a weaker contribution from the sectoral composition (because of its smaller equalizing effect in the initial year). The coefficients effects valued using the final characteristics are very similar to the previous case, when the initial ones were used (the educational coefficients effect is stronger, though).

---

<sup>17</sup> The difference with the previous counterfactual is that in this case the change in characteristics is evaluated using the initial coefficients (generally associated with higher inequality for the same characteristics). This implies that the aggregate coefficients effect (evaluated with the final characteristics) is negative, indicating that if characteristics in 1996/97 were the same as in 2014/15, inequality would have been reduced over time.

Table 3. Decomposition of the increase in Gini inequality, 1996/97–2014/15

	1996/97-2014/15		1996/97-2002/03		2002/03-08/09		2008/09-14/15	
<b>Final Gini</b>	0.468*** 0.006		0.415*** 0.008		0.415*** 0.007		0.468*** 0.006	
<b>Initial Gini</b>	0.397*** 0.006		0.397*** 0.006		0.415*** 0.008		0.415*** 0.007	
<b>Change in Gini</b>	0.071*** 0.008		0.018 0.010		0.000 0.010		0.053*** 0.009	
<b>Total Effect</b>	<b>Char. E</b>	<b>Coef. E</b>	<b>Char. E</b>	<b>Coef. E</b>	<b>Char. E</b>	<b>Coef. E</b>	<b>Char. E</b>	<b>Coef. E</b>
	0.070*** 0.010	0.001 0.010	0.037*** 0.008	-0.019* 0.008	0.015* 0.007	-0.015 0.011	0.031*** 0.005	0.021** 0.008
<b>Area</b>	0.006** 0.002	-0.001 0.006	0.000 0.000	-0.016 0.008	-0.001 0.000	-0.007 0.011	0.001 0.000	0.006 0.008
<b>Province</b>	-0.012*** 0.002	-0.032 0.038	-0.001 0.001	0.047 0.032	-0.002 0.001	0.068* 0.032	-0.002 0.001	-0.160*** 0.036
<b>Household size</b>								
N adults	0.004** 0.001	-0.092*** 0.020	0.000 0.000	-0.008 0.018	0.000 0.002	-0.001 0.023	-0.004*** 0.001	-0.075** 0.022
N children	-0.001* 0.001	-0.010 0.014	0.000 0.001	-0.015 0.017	0.000 0.001	-0.002 0.019	-0.001 0.000	0.005 0.016
<b>Age (head)</b>	0.001 0.001	0.040 0.029	0.000 0.001	0.057 0.036	0.000 0.001	0.013 0.034	0.003** 0.001	-0.032 0.026
<b>Sex (head)</b>	-0.001 0.002	-0.005 0.006	0.000 0.001	0.000 0.005	0.001 0.001	0.002 0.006	0.000 0.000	-0.008 0.008
<b>Marital status (head)</b>								
Single	0.000 0.000	0.000 0.002	-0.002* 0.001	0.002 0.002	0.000 0.000	0.001 0.002	0.002* 0.001	-0.002 0.002
Divorced	-0.001 0.001	-0.003 0.005	0.001 0.001	0.004 0.004	0.000 0.000	-0.004 0.005	0.000 0.000	-0.004 0.006
<b>Education (head)</b>	0.052*** 0.007	-0.024** 0.007	0.027*** 0.005	0.022* 0.011	0.011 0.006	-0.040** 0.012	0.034*** 0.004	-0.021 0.011
<b>Employment</b>								
Public s. (head)	0.022*** 0.004	-0.040*** 0.008	0.005 0.003	-0.010 0.009	0.002 0.001	-0.001 0.006	0.002 0.002	-0.016** 0.005
Self-employed (head)	-0.001 0.000	-0.001 0.021	0.001 0.003	-0.007 0.036	0.000 0.000	-0.009 0.044	-0.002 0.001	0.009 0.029
Subsistence S. (head)	0.005* 0.002	-0.042 0.029	0.001 0.001	-0.036 0.042	-0.002 0.001	0.003 0.051	0.006* 0.003	-0.002 0.042
Another sector (head)	-0.004 0.002	-0.021* 0.010	0.002 0.002	0.002 0.011	0.000 0.001	-0.001 0.015	-0.002 0.001	-0.020 0.013
Missing industry (head)	0.000 0.001	0.000 0.002	0.001 0.000	-0.001 0.001	0.000 0.000	0.000 0.000	0.000 0.000	0.000 0.000
Employment rate	-0.001 0.001	0.062* 0.032	0.003* 0.001	0.117** 0.041	0.005 0.003	-0.032 0.059	-0.005 0.003	-0.046 0.052
<b>Intercept</b>		0.168** 0.059		-0.174** 0.067		-0.002 0.084		0.387*** 0.070

Notes: p-values: \* <0.05; \*\* <0.01; \*\*\* <0.001. Robust standard errors in parentheses below.

Source: Authors' calculations based on IAF/IOF.

## 6 Concluding remarks

In this paper we have investigated the trend in consumption inequality in Mozambique since the end of the post-independence violent conflict. We have shown that the growth pattern that led to a reduction in poverty over time went along with a substantial increase in inequality, especially in most recent years. This was due to consumption disproportionately increasing among the better-off.

This increase in inequality, in line with the classical predictions for initial stages in the development of dualistic economies, can be explained as the result of the emergence of an increasingly skilled population working in the small but expanding non-subsistence private sector of the economy. The impact of the enhancement of this class was curbed by its weaker association with inequality in consumption, mitigating the final increase in inequality. However, the growth path predominant in the sub-Saharan region is quite different from the one followed by other countries, due to its much weaker manufacturing industry (e.g. Addison et al., 2017). In this context, rising inequality is the most likely result in economies with growth taking place in sectors characterized by high asset concentration, high capital absorption and skilled-labour intensity, such as mining, finance, insurance, and real estate (Odusola et al., 2017). The opposite would be expected if growth were based in labour-intensive sectors such as manufacturing, construction and agriculture.

Growing inequality occurs in an already unequal country with a large divide between urban and rural areas and among regions, with a limited redistributive capacity of the state. This raises legitimate concerns about the implications of the current distributional growth pattern if it accentuates the duality of the economy. Especially, when the country is still facing major challenges in improving the living conditions for most of its population, nearly half of which remains below the poverty line. For fulfilling the ‘no one left behind’ target encouraged by the sustainable development goals, Mozambique needs to accelerate the expansion of education. This expansion should reach, especially, least developed rural communities to improve their productivity and living conditions above the average, helping to narrow the large urban-rural gap.

## References

- Addison, T., V. Pikkarainen, R. Rönkkö, and F. Tarp (2017). ‘Development and poverty in sub-Saharan Africa’. Working Paper 2017/169. Helsinki: UNU-WIDER.
- Alvaredo, F. and L.C. Gasparini (2015). ‘Recent trends in inequality and poverty in developing countries’. In A.B. Atkinson and F. Bourguignon (Eds.), *Handbook of Income Distribution*, Vol. 2, Chapter 9: 697-805.
- Arndt, C., U. Beck, M.A. Hussain, K. Simler, F. Tarp, and K. Mahrt (2017a). ‘User guide to Poverty Line Estimation Analytical Software (PLEASE)’. In C. Arndt and F. Tarp, *Measuring poverty and wellbeing in developing countries*, Oxford University Press, Oxford, UK: 305–324.
- Arndt, C., A. Garcia, F. Tarp, and J. Thurlow (2012). ‘Poverty reduction and economic structure: comparative path analysis for Mozambique and Vietnam’. *Review of Income and Wealth*, 58(4): 742–763.

- Arndt, C., S. Jones, K. Mahrt, V. Salvucci, and F. Tarp (2017b). ‘A review of consumption poverty estimation for Mozambique’. In C. Arndt and F. Tarp, *Measuring poverty and wellbeing in developing countries*, Oxford University Press, Oxford, UK: 108–120.
- Arndt, C., S. Jones, and V. Salvucci (2015). ‘When do relative prices matter for measuring income inequality? The case of food prices in Mozambique’. *Journal of Economic Inequality*, 13(3): 449–464.
- Arndt, C. and K. Mahrt (2017). ‘Is Inequality Underestimated in Mozambique? Accounting for Underreported Consumption’. UNU-WIDER Working Paper 2017/153. Helsinki: UNU-WIDER.
- Blinder, A.S. (1973). “Wage discrimination: reduced form and structural estimates”. *Journal of Human Resources*, 8(4), 436–55.
- Elbers, C., P. Lanjouw, J. Mistiaen, B. Özler and K. Simler (2005). ‘Are neighbours equal? Estimating local inequality in three developing countries’. In R. Kanbur and A.J. Venables (eds.), *Spatial inequality and development*, Oxford University Press, New York: 37–76.
- Firpo, S., N.M. Fortin, and T. Lemieux (2007). ‘Decomposing Wage distributions using Recentered Influence Function regressions’. Unpublished Manuscript, University of British Columbia.
- Firpo, S., N.M. Fortin, and T. Lemieux (2009). ‘Unconditional quantile regressions,’ *Econometrica*, 77, 953–973.
- Fortin, N.M., T. Lemieux, and S. Firpo (2011). ‘Decomposition methods in economics’. In O. Ashenfelter and D. Card, eds., *Handbook of labor economics*, 4, 1–102, North Holland, Amsterdam.
- Fox, L., E. Bardassi, and K. Van den Broeck (2005). ‘Poverty in Mozambique: Unraveling changes and determinants’. Africa Region Working Paper Series 87, World Bank: Washington, DC.
- Gradín, C. (2016). ‘Why is income inequality so high in Spain?’. In L. Cappellari, S. Polachek, and K. Tatsiramos (Eds.), *Inequality around the World, Research on Labor Economics*, 44: 109–177.
- Hampel, F.R. (1974). ‘The influence curve and its role in robust estimation’. *Journal of the American Statistical Association*, 60, 383–393.
- James R.C., C. Arndt, and K.R. Simler (2005). ‘Has economic growth in Mozambique been pro-poor?’. International Food Policy Research Institute, Washington.
- MEF/DEEF (2016). Pobreza e bem-estar em Moçambique: Quarta avaliação nacional Inquirido ao Orçamento Familiar- IOF 2014/15. Maputo: Ministerio de Economia e Finanças, Direcção de Estudos Económicos e Financeiros.
- Monti, A.C. (1991), ‘The study of the Gini concentration ratio by means of the influence function’, *Statistica*, 51(4), 561–577.
- MPD/DNEAP (2010). Pobreza e bem-estar em Moçambique: Terceira avaliação nacional, Maputo: Ministério da Planificação e Desenvolvimento, Direcção Nacional de Estudos e Análise de Políticas.
- Oaxaca, R.L. (1973). “Male-female wage differentials in urban labor markets”, *International Economic Review*, 14(3), 693–709.
- Oaxaca, R.L. and M.R. Ransom (1999). ‘Identification in detailed wage decompositions’, *Review of Economics and Statistics*, 81, 154–157.
- Odusola, A., G.A. Cornia, H. Bhorat and P. Conceição (Eds.) (2017). *Income inequality trends in sub-Saharan Africa: divergence, determinants and consequences*. United Nations Development Programme (UNDP), New York.

## Appendix A: Inequality indices, a methodological note

The main index we use is **Gini** =  $\frac{1}{2n^2} \sum_i \sum_j \frac{|y_i - y_j|}{\mu}$ , which can be geometrically defined as twice the area between the Lorenz curve and the diagonal (indicating the situation of perfect equality).

We also use other indices to show robustness in the change in inequality and to better identify its distributional pattern.

The Atkinson **A**( $\epsilon$ ) =  $\mathbf{1} - \left( \frac{1}{n} \sum_i \left( \frac{y_i}{\mu} \right)^{1-\epsilon} \right)^{\frac{1}{1-\epsilon}}$ ,  $\epsilon > \mathbf{0}$ , and the General Entropy **GE**( $\alpha$ ) =  $\frac{1}{\alpha(\alpha-1)} \left( \frac{1}{n} \sum_i \left( \frac{y_i}{\mu} \right)^\alpha - \mathbf{1} \right)$  families of measures (with the corresponding limit expressions for respectively  $\epsilon = \mathbf{1}$  and  $\alpha = \mathbf{0}, \mathbf{1}$ ).

These measures are all consistent with Lorenz dominance, in the sense that whenever two Lorenz curves do not overlap, they will report lower inequality for the year with the Lorenz curve closer to the diagonal, although they might differ in the magnitude of the change (e.g. between 2002/03 and 2008/09). Whenever two Lorenz curves do overlap, these indices may report contradictory trends (e.g. between 2002/03 and 2008/09).

Even in the case of non-overlapping Lorenz curves, it is well-known that Atkinson and Entropy measures are consistent in the direction of the change in inequality in the range in which  $\alpha < \mathbf{1}$ , with  $\alpha = \mathbf{1} - \epsilon$ .

## Appendix B: Additional tables

Table A1. Inequality indices and quantiles (real per capita consumption, divided by the poverty line)

	Level				Change (%)			
	1996/97	2002/03	2008/09	2014/15	1996/2002	2002/2008	2008/2014	1996/2014
<b>Mean</b>	0.972	1.315	1.329	1.613	35.2	1.1	21.4	65.9
<b>Quantiles</b>								
<i>p</i> 5	0.254	0.333	0.316	0.337	31.2	-5.0	6.6	32.8
<i>p</i> 10	0.329	0.427	0.417	0.445	29.8	-2.2	6.7	35.5
<i>p</i> 25	0.485	0.630	0.637	0.683	29.9	1.1	7.2	40.8
<i>p</i> 50	0.726	0.958	0.977	1.069	31.9	2.0	9.5	47.4
<i>p</i> 75	1.114	1.471	1.518	1.699	32.0	3.2	12.0	52.5
<i>p</i> 90	1.721	2.320	2.318	2.781	34.8	-0.1	20.0	61.6
<i>p</i> 95	2.356	3.170	3.138	4.086	34.6	-1.0	30.2	73.4
<b>Inequality</b>								
<i>p</i> 50/ <i>p</i> 10	2.2	2.2	2.3	2.4	1.7	4.2	2.7	8.8
<i>p</i> 90/ <i>p</i> 50	2.4	2.4	2.4	2.6	2.2	-2.0	9.6	9.7
<i>Gini</i>	0.397	0.415	0.415	0.468	4.6	-0.1 <sup>#</sup>	12.7	17.8
	(0.002)	(0.004)	(0.003)	(0.002)				
<i>GE</i> (-2)	0.565	0.679	1.127	15.068	20.2	65.9	1237.9	2568.5
	(0.012)	(0.025)	(0.064)	(4.775)				
<i>GE</i> (-1)	0.322	0.357	0.409	0.532	10.8	14.4	30.2	65.2
	(0.004)	(0.007)	(0.008)	(0.016)				
<i>GE</i> (0)	0.268	0.297	0.303	0.381	10.7	2.2 <sup>#</sup>	25.7	42.3
	(0.003)	(0.007)	(0.005)	(0.004)				
<i>GE</i> (1)	0.313	0.380	0.367	0.520	21.1	-3.4 <sup>#</sup>	41.8	66.0
	(0.006)	(0.016)	(0.010)	(0.013)				
<i>GE</i> (2)	0.601	1.132	0.887	2.242	88.5	-21.6 <sup>#</sup>	152.8	273.4
	(0.031)	(0.162)	(0.061)	(0.322)				
<i>A</i> (.1)	0.030	0.036	0.035	0.049	19.0	-2.7 <sup>#</sup>	38.7	60.7
	(0.001)	(0.001)	(0.001)	(0.001)				
<i>A</i> (.25)	0.072	0.084	0.082	0.111	16.4	-1.7 <sup>#</sup>	34.7	54.0
	(0.001)	(0.003)	(0.002)	(0.002)				
<i>A</i> (.5)	0.133	0.151	0.150	0.194	13.1	-0.4 <sup>#</sup>	29.2	45.5
	(0.002)	(0.004)	(0.003)	(0.003)				
<i>A</i> (.75)	0.187	0.207	0.209	0.261	10.8	0.8 <sup>#</sup>	24.8	39.3
	(0.002)	(0.005)	(0.003)	(0.003)				
<i>A</i> (.9)	0.216	0.238	0.241	0.295	9.8	1.4 <sup>#</sup>	22.5	36.5
	(0.002)	(0.005)	(0.004)	(0.003)				
<i>A</i> (1)	0.235	0.257	0.262	0.317	9.2	1.9 <sup>#</sup>	21.1	34.8
	(0.003)	(0.005)	(0.004)	(0.003)				
<i>A</i> (2)	0.392	0.417	0.450	0.516	6.3	7.9	14.6	31.6
	(0.003)	(0.005)	(0.005)	(0.008)				

Note:  $A(\epsilon)$ =Atkinson family;  $GE(\alpha)$ =Generalized Entropy family. Bootstrap standard error in parentheses (500 replications). (<sup>#</sup>) Statistically not significant at 95%, the rest of changes in Gini, Atkinson and GE indices are statistically significant (biased corrected confidence intervals).

Source: Authors' calculations based on IAF/IOF.



Table A2. Inequality indices (real equivalized consumption using square root of household size)

	Level				Change (%)			
	1996/97	2002/03	2008/09	2014/15	1996/2002	2002/2008	2008/2014	1996/2014
<i>p50/p10</i>	2.1	2.1	2.3	2.3	2.2	8.7	2.6	14.0
<i>p90/p50</i>	2.1	2.4	2.3	2.5	12.1	-6.2	9.1	14.8
<i>Gini</i>	0.373	0.405	0.397	0.439	8.6	-2.1	10.6	17.6
<i>GE(-2)</i>	0.431	0.579	0.820	10.221	34.5	41.6	1146	2274
<i>GE(-1)</i>	0.271	0.327	0.357	0.481	20.7	9.3	34.7	77.6
<i>GE(0)</i>	0.237	0.279	0.277	0.336	17.6	-0.9	21.6	41.7
<i>GE(1)</i>	0.285	0.346	0.332	0.431	21.1	-3.8	29.7	51.1
<i>GE(2)</i>	0.529	0.761	0.751	1.419	43.9	-1.4	88.9	168.0
<i>A(.1)</i>	0.028	0.033	0.032	0.041	20.2	-3.8	28.1	48.2
<i>A(.25)</i>	0.065	0.078	0.075	0.095	19.1	-3.5	25.9	44.7
<i>A(.5)</i>	0.121	0.142	0.138	0.169	17.5	-2.9	22.9	40.3
<i>A(.75)</i>	0.169	0.196	0.192	0.232	16.3	-1.9	20.3	37.3
<i>A(.9)</i>	0.195	0.225	0.222	0.265	15.6	-1.2	19.0	35.9
<i>A(1)</i>	0.211	0.244	0.242	0.286	15.3	-0.8	18.2	35.2
<i>A(2)</i>	0.351	0.396	0.417	0.491	12.5	5.4	17.7	39.6

Note:  $A(\varepsilon)$ =Atkinson family;  $GE(\alpha)$ =Generalized Entropy family.

Source: Authors' calculations based on IAF/IOF.

Table A3. Inequality indices (nominal per capita consumption)

	Level				Change (%)			
	1996/97	2002/03	2008/09	2014/15	1996/2002	2002/2008	2008/2014	1996/2014
<i>p50/p10</i>	2.3	2.3	2.5	2.6	-0.9	7.9	3.5	10.6
<i>p90/p50</i>	2.7	2.7	2.6	3.2	-0.5	-1.9	20.9	18.0
<i>Gini</i>	0.448	0.471	0.460	0.537	5.1	-2.3	16.7	19.8
<i>GE(-2)</i>	0.781	0.921	1.601	21.23	17.9	73.9	1226	2618
<i>GE(-1)</i>	0.419	0.460	0.513	0.734	9.7	11.5	43.2	75.1
<i>GE(0)</i>	0.341	0.380	0.371	0.505	11.4	-2.4	35.9	47.8
<i>GE(1)</i>	0.416	0.520	0.465	0.701	25.2	-10.7	50.8	68.5
<i>GE(2)</i>	0.966	2.008	1.315	3.166	107.8	-34.5	141	228
<i>A(.1)</i>	0.040	0.049	0.044	0.065	22.5	-9.6	47.6	63.5
<i>A(.25)</i>	0.094	0.111	0.102	0.147	19.2	-8.1	43.3	56.9
<i>A(.5)</i>	0.170	0.195	0.184	0.252	14.8	-5.9	37.2	48.3
<i>A(.75)</i>	0.234	0.262	0.252	0.332	11.7	-3.8	32.1	41.8
<i>A(.9)</i>	0.268	0.296	0.288	0.372	10.2	-2.7	29.4	38.8
<i>A(1)</i>	0.289	0.316	0.310	0.396	9.4	-2.0	27.7	37.0
<i>A(2)</i>	0.456	0.479	0.506	0.595	5.1	5.7	17.5	30.4

Note:  $A(\varepsilon)$ =Atkinson family;  $GE(\alpha)$ =Generalized Entropy family.

Source: Authors' calculations based on IAF/IOF.

Table A4. Inequality indices (nominal equivalized consumption using square root of household size)

	Level				Change (%)			
	1996/97	2002/03	2008/09	2014/15	1996/2002	2002/2008	2008/2014	1996/2014
<i>p50/p10</i>	2.2	2.2	2.4	2.5	0.1	11.0	2.8	14.1
<i>p90/p50</i>	2.7	2.8	2.6	3.1	2.1	-8.2	21.5	13.8
<i>Gini</i>	0.442	0.468	0.445	0.511	5.8	-5.0	14.9	15.6
<i>GE(-2)</i>	0.662	0.815	1.141	14.386	23.1	40.1	1161	2074
<i>GE(-1)</i>	0.388	0.440	0.456	0.671	13.4	3.6	47.3	73.1
<i>GE(0)</i>	0.330	0.371	0.345	0.456	12.6	-7.2	32.2	38.2
<i>GE(1)</i>	0.406	0.484	0.421	0.596	19.2	-13.0	41.4	46.6
<i>GE(2)</i>	0.859	1.267	1.013	2.013	47.5	-20.1	98.8	134
<i>A(.1)</i>	0.039	0.046	0.040	0.056	17.9	-12.4	39.4	43.9
<i>A(.25)</i>	0.091	0.106	0.094	0.128	16.2	-11.5	36.5	40.4
<i>A(.5)</i>	0.166	0.189	0.171	0.226	13.8	-9.8	32.3	35.9
<i>A(.75)</i>	0.228	0.255	0.235	0.303	11.9	-7.9	28.7	32.6
<i>A(.9)</i>	0.261	0.289	0.270	0.342	11.0	-6.8	26.7	31.1
<i>A(1)</i>	0.281	0.310	0.292	0.366	10.4	-6.0	25.6	30.3
<i>A(2)</i>	0.437	0.468	0.477	0.573	7.1	1.9	20.2	31.2

Note:  $A(\varepsilon)$ =Atkinson family;  $GE(\alpha)$ =Generalized Entropy family.

Source: Authors' calculations based on IAF/IOF.

Table A5. RIF Regressions, 1996/97–2014/15 (nominal per capita consumption)

	1996/97	2014/15
<b>Area</b>		
Urban 1996	0.081***	---
Urban	---	0.015
<b>Province</b>		
Niassa	-0.100*	-0.277***
Cabo Delgado	-0.095*	-0.296***
Nampula	-0.051	-0.202***
Zambezia	-0.130***	-0.205***
Tete	-0.07	-0.284***
Manica	-0.044	-0.260***
Sofala	0.007	-0.172***
Inhambane	-0.100*	-0.232***
Gaza	-0.090*	-0.206***
Maputo City	0.132*	0.548***
<b>Household size</b>		
N. adults	-0.002	-0.030***
N. children	-0.005	-0.006*
<b>Age (head)</b>		
25-34	0.022	-0.011
35-44	0.061**	0.062***
45-54	0.065**	0.090***
55 or older	0.067**	0.098***
<b>Sex (head)</b>		
Female	0.031	-0.022
<b>Marital status (head)</b>		
Single	0.087*	0.08
Divorced	-0.023	-0.033
<b>Attained education (head)</b>		
Some/lower primary	0.022	-0.030***
Upper primary	0.178***	0.012
Lower secondary	0.648***	0.152***
Upper secondary	0.941*	0.502***
Technical	0.914***	0.647***
Higher	2.902***	1.920***
Literate	0.000	-0.028***
<b>Employment</b>	-0.079*	-0.485***
Public sector (head)		
Self-employed (head)	0.044	0.026
Subsistence sector (head)	0.01-	-0.066*
Another occupation (head)	0.051	-0.087**
Missing sector (head)	0.083	-0.107
Employment rate (household)	-0.051	0.068*
<b>Intercept</b>	0.428***	0.746***
<i>N</i> Observations	42,143	164,359
$R^2$	8.7	10.1
$F$	9.65***	13.08***

Note: p-values: \* <0.05; \*\* <0.01; \*\*\* <0.001.

Source: Authors' calculations based on IAF/IOF.

Table A6. Decomposition of the increase in Gini inequality, 1996/97–2014/15 (nominal per capita consumption)

	1996/97-2014/15	
<b>Change in Gini</b>	0.089*** 0.009	
	<b>Char. E</b>	<b>Coef. E</b>
<b>Total Effect</b>	0.073*** 0.011	
<b>Area</b>	0.002 0.002	-0.014* 0.006
<b>Province</b>	-0.016*** 0.003	
<b>Household size</b>		
N adults	0.005** 0.001	-0.087*** 0.021
N children	-0.001* 0.001	
<b>Age (head)</b>	0.001 0.001	
<b>Sex (head)</b>	-0.002 0.002	
<b>Marital status (head)</b>		
Single	0.000 0.000	
Divorced	-0.001 0.001	
<b>Education (head)</b>	0.061*** 0.008	
<b>Employment</b>		
Public s. (head)	0.026*** 0.004	-0.045*** 0.009
Self-employed (head)	-0.001 0.001	
Subsistence S. (head)	0.005* 0.002	-0.053 0.030
Another sector (head)	-0.006** 0.002	
Missing industry	0.001 0.001	
Employment rate	-0.002* 0.001	
<b>Intercept</b>		0.318*** 0.069

Notes: p-values: \* <0.05; \*\* <0.01; \*\*\* <0.001. Robust standard errors in parentheses below.

Source: Authors' calculations based on IAF/IOF.

Table A7. Decomposition of the increase in Gini inequality, 1996/97–2014/15 (alternative counterfactual)

	1996/97–2014/15	
<b>Change in Gini</b>	0.071*** (0.008)	
	<b>Char. E</b>	<b>Coef. E</b>
<b>Total Effect</b>	0.103*** (0.016)	-0.033 (0.019)
<b>Area</b>	0.006* (0.002)	-0.001 (0.009)
<b>Province</b>	-0.001 (0.001)	-0.043 (0.037)
<b>Household size</b>		
N adults	0.000 (0.001)	-0.087*** (0.019)
N children	-0.001 (0.001)	-0.011 (0.015)
<b>Age (head)</b>	0.000 (0.000)	0.040 (0.029)
<b>Sex (head)</b>	0.001 (0.002)	-0.007 (0.008)
<b>Marital status (head)</b>		
Single	0.000 (0.000)	0.000 (0.002)
Divorced	0.000 (0.001)	-0.004 (0.006)
<b>Education (head)</b>	0.093*** (0.016)	-0.064** (0.020)
<b>Employment</b>		
Public s. (head)	0.003 (0.002)	-0.021*** (0.004)
Self-employed (head)	-0.001 (0.001)	-0.001 (0.020)
Subsistence S. (head)	0.000 (0.003)	-0.037 (0.026)
Another sector (head)	0.002 (0.002)	-0.027* (0.013)
Missing industry (head)	0.000 (0.001)	0.000 (0.000)
Employment rate	0.001 (0.001)	0.060* (0.031)
<b>Intercept</b>		0.168** (0.059)

Notes: p-values: \* <0.05; \*\* <0.01; \*\*\* <0.001. Robust standard errors in parentheses below.

Source: Authors' calculations based on IAF/IOF.

Table A8. (Log-)Real per capita consumption regressions, 1996/97–2014/15

	1996/97	2002/03	2002/03	2008/09	2014/15
<b>Area</b>					
Urban 1996	-0.055***	-0.088***	---	---	---
Urban	---	---	-0.107***	-0.061***	-0.119***
<b>Province</b>					
Niassa	-0.125***	0.346***	0.356***	0.392***	-0.557***
Cabo Delgado	0.118***	0.125***	0.138***	0.317***	-0.296***
Nampula	-0.091***	0.216***	0.240***	0.135***	-0.519***
Zambezia	-0.018	0.308***	0.315***	0.003	-0.536***
Tete	-0.261***	-0.006	0.000	0.231***	-0.217***
Manica	0.174***	0.289***	0.300***	0.055**	-0.285***
Sofala	-0.537***	0.512***	0.520***	0.004	-0.242***
Inhambane	-0.225***	-0.301***	-0.288***	0.202***	-0.359***
Gaza	0.167***	0.294***	0.305***	0.039*	-0.372***
Maputo City	0.129***	0.316***	0.311***	0.349***	0.227***
<b>Household size</b>					
N. adults	-0.032***	0.016***	0.016***	-0.014***	-0.001
N. children	-0.118***	-0.108***	-0.108***	-0.108***	-0.125***
<b>Age (head)</b>					
25-34	-0.116***	-0.060**	-0.058*	-0.006	-0.002
35-44	-0.065***	-0.093***	-0.093***	-0.014	0.062***
45-54	-0.003	-0.032	-0.03	0.026	0.068***
55 or older	-0.067***	-0.048*	-0.044	0.054**	0.076***
<b>Sex (head)</b>					
Female	0.026	0.094***	0.095***	0.074***	0.013*
<b>Marital status (head)</b>					
Single	0.038	-0.03	-0.021	0.101**	-0.008
Divorced	-0.007	-0.117***	-0.110***	-0.128***	-0.040***
<b>Attained education (head)</b>					
Some/lower primary	0.131***	0.043***	0.052***	0.005	0.067***
Upper primary	0.347***	0.310***	0.322***	0.120***	0.169***
Lower secondary	0.542***	0.635***	0.650***	0.344***	0.385***
Upper secondary	0.848***	0.994***	1.008***	0.637***	0.678***
Technical	0.755***	0.873***	0.884***	0.720***	0.777***
Higher	1.390***	1.324***	1.327***	1.106***	1.229***
Literate	0.127***	0.097***	0.096***	0.168***	0.114***
<b>Employment</b>					
Public sector (head)	0.014	-0.032	-0.042*	0.079***	-0.039***
Self-employed (head)	0.084***	0.059***	0.051***	0.178***	0.039***
Subsistence sector (head)	-0.116***	-0.179***	-0.178***	-0.123***	-0.085***
Another occupation (head)	0.139***	0.054*	0.067**	0.120***	0.168***
Missing sector (head)	0.239***	-0.191**	-0.197**	-0.063	-0.076
Employment rate (household)	0.02	0.180***	0.162***	-0.048*	0.237***
<b>Intercept</b>	0.151***	-0.082*	-0.063	0.042	0.451***
<i>N</i> Observations	42,143	44,083	44,083	51,175	164,359
<i>R</i> <sup>2</sup>	30.0	27.4	27.6	24.0	34.8
<i>F</i>	394***	269***	268***	281***	2,026***

Note: p-values: \* <0.05; \*\* <0.01; \*\*\* <0.001.

Source: Authors' calculations based on IAF/IOF.

Table A9. Differential in Lorenz between years

Percentile	1996/2002	2002/08	2008/14	1996/2014	percentile	1996/2002	2002/08	2008/14	1996/2014
1	0.000	0.000*	0.000	0.000***	51	0.009	0.002	0.025***	0.036***
2	0.000	0.001**	0.000	0.001***	52	0.009	0.001	0.026***	0.036***
3	0.000	0.001**	0.000	0.001***	53	0.009	0.001	0.027***	0.037***
4	0.000	0.001**	0.000	0.002***	54	0.009	0.001	0.028***	0.038***
5	0.000	0.002*	0.000	0.002***	55	0.010	0.001	0.028***	0.039***
6	0.001	0.002*	0.001	0.003***	56	0.010	0.001	0.029***	0.040***
7	0.001	0.002*	0.001	0.003***	57	0.010	0.001	0.030***	0.041***
8	0.001	0.002*	0.001*	0.004***	58	0.010	0.001	0.031***	0.042***
9	0.001	0.002*	0.002*	0.005***	59	0.010	0.001	0.032***	0.043***
10	0.001	0.002*	0.002**	0.005***	60	0.011	0.000	0.033***	0.044***
11	0.001	0.002*	0.002**	0.006***	61	0.011	0.000	0.033***	0.045***
12	0.001	0.002*	0.003**	0.006***	62	0.011	0.000	0.034***	0.045***
13	0.002	0.002*	0.003**	0.007***	63	0.011	0.000	0.035***	0.046***
14	0.002	0.002	0.004**	0.008***	64	0.011	0.000	0.036***	0.047***
15	0.002	0.002	0.004**	0.009***	65	0.012	<b>-0.001</b>	0.037***	0.048***
16	0.002	0.002	0.005***	0.009***	66	0.012	<b>-0.001</b>	0.038***	0.049***
17	0.002	0.002	0.005***	0.010***	67	0.013	<b>-0.001</b>	0.039***	0.050***
18	0.002	0.003	0.006***	0.011***	68	0.013	<b>-0.001</b>	0.039***	0.051***
19	0.002	0.003	0.006***	0.011***	69	0.013	<b>-0.002</b>	0.040***	0.052***
20	0.003	0.003	0.006***	0.012***	70	0.013	<b>-0.002</b>	0.041***	0.053***
21	0.003	0.003	0.007***	0.013***	71	0.014	<b>-0.002</b>	0.042***	0.053***
22	0.003	0.003	0.007***	0.013***	72	0.014	<b>-0.002</b>	0.043***	0.054***
23	0.003	0.003	0.008***	0.014***	73	0.014	<b>-0.003</b>	0.044***	0.055***
24	0.004	0.003	0.009***	0.015***	74	0.015	<b>-0.003</b>	0.044***	0.056***
25	0.004	0.003	0.009***	0.016***	75	0.015	<b>-0.003</b>	0.045***	0.057***
26	0.004	0.003	0.010***	0.016***	76	0.015	<b>-0.003</b>	0.046***	0.058***
27	0.004	0.003	0.010***	0.017***	77	0.015	<b>-0.003</b>	0.047***	0.059***
28	0.004	0.003	0.011***	0.018***	78	0.016	<b>-0.004</b>	0.048***	0.060***
29	0.005	0.003	0.011***	0.019***	79	0.017*	<b>-0.004</b>	0.049***	0.061***
30	0.005	0.003	0.012***	0.019***	80	0.017	<b>-0.005</b>	0.050***	0.061***
31	0.005	0.003	0.012***	0.020***	81	0.017	<b>-0.005</b>	0.051***	0.062***
32	0.005	0.003	0.013***	0.021***	82	0.017	<b>-0.005</b>	0.051***	0.063***
33	0.005	0.003	0.013***	0.021***	83	0.017	<b>-0.005</b>	0.052***	0.064***
34	0.005	0.003	0.014***	0.022***	84	0.017	<b>-0.005</b>	0.053***	0.065***
35	0.005	0.003	0.015***	0.023***	85	0.017	<b>-0.005</b>	0.053***	0.065***
36	0.006	0.003	0.015***	0.023***	86	0.017	<b>-0.006</b>	0.054***	0.066***
37	0.006	0.003	0.016***	0.024***	87	0.017	<b>-0.006</b>	0.055***	0.066***
38	0.006	0.003	0.016***	0.025***	88	0.018	<b>-0.006</b>	0.055***	0.067***
39	0.006	0.002	0.017***	0.026***	89	0.018	<b>-0.006</b>	0.056***	0.068***
40	0.006	0.002	0.018***	0.027***	90	0.017	<b>-0.005</b>	0.056***	0.068***
41	0.007	0.002	0.018***	0.027***	91	0.018	<b>-0.006</b>	0.056***	0.069***
42	0.007	0.002	0.019***	0.028***	92	0.018	<b>-0.006</b>	0.056***	0.069***
43	0.007	0.002	0.020***	0.029***	93	0.018	<b>-0.006</b>	0.056***	0.068***
44	0.007	0.002	0.020***	0.030***	94	0.019	<b>-0.006</b>	0.055***	0.068***
45	0.008	0.002	0.021***	0.031***	95	0.019	<b>-0.006</b>	0.054***	0.067***
46	0.008	0.002	0.022***	0.031***	96	0.019	<b>-0.005</b>	0.052***	0.066***
47	0.008	0.002	0.022***	0.032***	97	0.021*	<b>-0.005</b>	0.049***	0.065***
48	0.008	0.002	0.023***	0.033***	98	0.021*	<b>-0.003</b>	0.044***	0.063***
49	0.008	0.002	0.024***	0.034***	99	0.022**	<b>-0.001</b>	0.035***	0.055***
50	0.009	0.002	0.025***	0.035***					

Note: p-values: \* <0.05; \*\* <0.01; \*\*\* <0.001 (bootstraps standard errors).

Source: Authors' calculations based on IAF/IOF.

Table A10. Daily consumption shares (deciles, quintiles, and top 5%), with standard errors

Real	Per capita								Equivalentized (square root of household size)							
	1996/97		2002/03		2008/09		2014/15		1996/97		2002/03		2008/09		2014/15	
	Share	St.E.	Share	St.E.	Share	St.E.	Share	St.E.	Share	St.E.	Share	St.E.	Share	St.E.	Share	St.E.
D1	2.49	0.02	2.40	0.03	2.18	0.02	1.97	0.01	2.80	0.02	2.57	0.03	2.31	0.02	2.13	0.01
D2	3.95	0.03	3.77	0.04	3.72	0.03	3.28	0.02	4.32	0.03	3.98	0.03	3.92	0.03	3.54	0.02
D3	4.97	0.03	4.77	0.04	4.75	0.03	4.23	0.02	5.31	0.03	4.92	0.04	5.01	0.03	4.54	0.02
D4	5.87	0.03	5.70	0.05	5.75	0.04	5.15	0.02	6.26	0.03	5.81	0.04	6.02	0.04	5.50	0.02
D5	6.92	0.04	6.71	0.06	6.78	0.04	6.10	0.03	7.22	0.04	6.74	0.04	7.02	0.04	6.50	0.02
D6	8.08	0.04	7.88	0.06	8.00	0.05	7.19	0.03	8.28	0.04	7.85	0.05	8.20	0.05	7.59	0.03
D7	9.48	0.05	9.19	0.07	9.43	0.05	8.59	0.04	9.58	0.04	9.19	0.06	9.62	0.05	8.95	0.03
D8	11.50	0.05	11.19	0.08	11.46	0.07	10.60	0.05	11.27	0.05	11.12	0.06	11.52	0.06	10.89	0.04
D9	14.82	0.07	14.68	0.11	14.82	0.08	14.15	0.06	14.15	0.06	14.43	0.08	14.63	0.07	14.32	0.05
D10	31.91	0.27	33.71	0.46	33.10	0.35	38.73	0.26	30.82	0.26	33.39	0.34	31.75	0.33	36.03	0.20
Q1	6.45	0.05	6.17	0.06	5.90	0.05	5.25	0.03	7.12	0.05	6.55	0.05	6.23	0.05	5.66	0.03
Q2	10.84	0.06	10.47	0.09	10.51	0.07	9.38	0.04	11.57	0.06	10.73	0.07	11.03	0.07	10.05	0.04
Q3	15.00	0.08	14.58	0.12	14.78	0.09	13.30	0.06	15.49	0.07	14.59	0.09	15.22	0.08	14.09	0.05
Q4	20.98	0.10	20.39	0.15	20.89	0.12	19.19	0.08	20.85	0.09	20.31	0.12	21.14	0.11	19.85	0.07
Q5	46.73	0.24	48.39	0.38	47.92	0.29	52.88	0.21	44.97	0.24	47.82	0.30	46.38	0.28	50.35	0.17
Bottom 5%	0.98	0.01	0.94	0.01	0.78	0.01	0.75	0.01	1.11	0.01	1.01	0.01	0.85	0.01	0.80	0.01
Top 5%	21.76	0.27	23.63	0.50	23.04	0.37	28.46	0.29	21.28	0.26	23.07	0.36	21.96	0.35	25.83	0.22
	<b>Value</b>	<b>St.E.</b>	<b>Value</b>	<b>St.E.</b>	<b>Value</b>	<b>St.E.</b>	<b>Value</b>	<b>St.E.</b>	<b>Value</b>	<b>St.E.</b>	<b>Value</b>	<b>St.E.</b>	<b>Value</b>	<b>St.E.</b>	<b>Value</b>	<b>St.E.</b>
Mean	5,350	29	10,924	78	23,829	0.140	47,088	0.246	12,165	61	25,211	148	53,617	0.290	106,180	0.441
Median	3,993		7,955		17,509		31,214		9,426		18,409		40,413		74,491	
Nominal	Share	St.E.	Share	St.E.	Share	St.E.	Share	St.E.	Share	St.E.	Share	St.E.	Share	St.E.	Share	St.E.
D1	2.12	0.02	2.09	0.03	1.91	0.02	1.58	0.01	2.29	0.02	2.23	0.03	2.01	0.02	1.71	0.01
D2	3.42	0.03	3.33	0.03	3.23	0.03	2.63	0.02	3.59	0.03	3.40	0.03	3.40	0.03	2.84	0.01
D3	4.39	0.03	4.21	0.04	4.19	0.03	3.46	0.02	4.54	0.03	4.18	0.03	4.39	0.03	3.70	0.02
D4	5.25	0.03	5.07	0.05	5.16	0.04	4.25	0.02	5.37	0.03	5.03	0.04	5.33	0.03	4.53	0.02
D5	6.19	0.04	5.99	0.05	6.20	0.04	5.14	0.03	6.24	0.04	5.93	0.04	6.37	0.04	5.46	0.02
D6	7.38	0.04	7.03	0.06	7.42	0.05	6.21	0.03	7.29	0.04	6.97	0.05	7.57	0.04	6.57	0.03
D7	8.97	0.05	8.35	0.07	8.99	0.05	7.66	0.04	8.68	0.05	8.27	0.05	9.11	0.05	7.98	0.03
D8	11.02	0.05	10.37	0.09	11.14	0.07	9.88	0.05	10.71	0.06	10.31	0.06	11.24	0.06	10.21	0.04
D9	14.86	0.08	14.17	0.11	14.73	0.08	14.16	0.07	14.73	0.07	14.48	0.09	14.88	0.07	14.59	0.06
D10	36.38	0.28	39.38	0.46	37.04	0.34	45.03	0.27	36.56	0.27	39.19	0.34	35.70	0.31	42.41	0.21
Q1	5.55	0.04	5.42	0.06	5.14	0.04	4.22	0.03	5.88	0.04	5.63	0.05	5.41	0.04	4.55	0.02
Q2	9.65	0.06	9.27	0.08	9.34	0.07	7.71	0.04	9.91	0.06	9.21	0.07	9.72	0.06	8.23	0.04
Q3	13.57	0.08	13.02	0.11	13.62	0.09	11.34	0.06	13.54	0.08	12.90	0.09	13.94	0.08	12.04	0.05
Q4	19.99	0.10	18.72	0.15	20.13	0.12	17.54	0.09	19.38	0.09	18.58	0.11	20.35	0.11	18.18	0.07
Q5	51.24	0.25	53.55	0.37	51.77	0.28	59.19	0.21	51.29	0.24	53.68	0.28	50.58	0.26	57.00	0.17
Bottom 5%	0.85	0.01	0.83	0.01	0.69	0.01	0.61	0.01	0.93	0.01	0.88	0.01	0.75	0.01	0.65	0.01
Top 5%	25.55	0.28	28.88	0.51	26.52	0.37	33.98	0.31	25.69	0.26	28.41	0.35	25.27	0.33	31.09	0.24
	<b>Value</b>	<b>St.E.</b>	<b>Value</b>	<b>St.E.</b>	<b>Value</b>	<b>St.E.</b>	<b>Value</b>	<b>St.E.</b>	<b>Value</b>	<b>St.E.</b>	<b>Value</b>	<b>St.E.</b>	<b>Value</b>	<b>St.E.</b>	<b>Value</b>	<b>St.E.</b>
Mean	5,355	36	10,903	104	23,882	0.171	46,618	0.289	12,406	79	25,376	192	53,731	0.338	104,674	0.518
Median	3,594		7,090		16,181		26,267		8,323		16,334		37,078		62,498	

Note: Mean and median in MZM (1996/97 and 2002/03) and MZN (2008/09 and 2014/15).

Source: Authors' calculations based on IAF/IOF.